

New children's home announced for Ardee

Jason Newman

jason.newman@dundalkdemocrat.ie

Family-owned healthcare operator, Ann's, has announced the launch of a new service, Children's Care Ireland, which will see the opening of two new children's residential homes, one in Ardee and one in Monaghan, with the creation of 25 new jobs.

The new centres will provide specialist care and support to young people between the ages of 13–17 and the company has ambitious plans for further expansion of the service.

In the development of this new service, jobs are being recruited across a host of specialisms including social

care workers, social care leaders and deputy managers.

The service has been established to meet the ever-increasing demand for residential placements for children and young people.

Tusla, The Child and Family Agency, cites that since 2015 there has been a 61 per cent increase in the number of children and young people seeking residential placements.

Children's Care Ireland aims to increase capacity for residential places whilst delivering the highest quality care and support for children and young people.

Sarah McQuillan, Director of Children's Care Ireland said:

"Through tailored care programs provided in small family style homes we will provide children and young people in our care with safety and security in a homely environment where they can thrive and reach their full potential.

"Our highly trained care teams and specialist clinicians will guide our young people through recovery to resilience and brighter futures.

"We are delighted to have engaged with Cornell University who have pioneered groundbreaking therapeutic approaches to Trauma-informed Care and all our staff will receive ongoing training and support in this framework of care

delivery."

Children's Care Ireland is part of The Ann's Group which was initially established as a domiciliary care agency in 1994.

Run by the McQuade family the company has grown to become the largest healthcare provider in Northern Ireland with over 3,000 staff across its care home, home care and nursing agency divisions.

Ann's has enjoyed a longstanding reputation for the delivery of quality care and has a history of retaining and developing their staff.

For further information on the roles currently being recruited for, visit www.anns.co.uk/anns-children-care/about-us/



Patrick McQuade and Sarah McQuillan from The Ann's Group are pictured as they announce the launch of a new service in Ardee

Paige leads charity walk for Down Syndrome

Jason Newman

jason.newman@dundalkdemocrat.ie

Each year Irish Life nominates and votes for two Irish Life staff charity partners and set about fundraising for the year and this year Paige Gernon of the Dundalk office will be doing her bit.

This year their charity partners are the Down Syndrome Centre North-East and The Irish Motor Neurone Disease Association (IMNDA) and on 26 April, Workplace Wellbeing Day, Paige who nominated the Down Syndrome centre, will walk from 8am to 4pm stopping only briefly after every couple of loops.

Each loop is 50 minutes to walk and will start and finish at the front door of their Irish Life Dundalk office.

Paige's niece Robyn inspired her to nominate the Down Syndrome Centre North-East as she uses the centre and its amazing facilities on a weekly basis.

She uses speech and language therapy and schools readiness classes every week, she also attends summer camps and much more.

Not only is the centre a great support for Robyn but it has also been a massive support to the family especially Robyn's parents, Stephen and Niamh.

Robyn has been such an



Paige Gernon with her niece Robyn

inspiration to Paige over the last four years and her determination amazes her every day.

Paige said: "It is such a pleasure to be a part of the staff charities group, it gives a real sense of accomplishment and everyone has been so supportive so far this year.

"I am truly looking forward to all the events in the coming year ahead."

The Dundalk office will have donation buckets, a gofundme link and card machine available on the day for people to donate for the event.

<https://gofundme.com/6d7d4c5e>
Last year they raised €5,555 for ChildVision and the Gavin Glynn Foundation and have set a challenge to try to beat it this year.

Both charities will be there on the morning and will

talk to staff about their charity, the great work they do and what it means to partner with Irish Life.

Some of the kids from the Down Syndrome Centre North-East will hopefully be there on the day to say hello too. There are approximately 200 staff working in the Irish Life Centre in Dundalk and five of their staff will join Paige on each loop to support her along the way.



Comhairle Contae Lú
Louth County Council

Planning and Development Act 2000,
as amended
Planning and Development Regulations 2001,
as amended

Notice of Intention to Undertake Development by
Louth County Council Under Section 179A of The
Planning and Development Act, 2000 (as amended)

In accordance with the provisions of Section 179A of the Planning and Development Act 2000 (as amended) Louth County Council gives notice of its intention to carry out the following development:

The construction of 97no. houses including 12no. 2-bed bungalows, 40no. two storey 2-bed houses, 30no. two storey 3-bed houses, 13no. two storey 4-bed houses, and 2no. 3-bed bungalows on a site of 3.03 hectares in the townland of Yellowbatter at Ballymakenny Road, Drogheda, Co Louth.

The development will also include the construction of a new entrance onto the Ballymakenny Road; provision of new cycleway, footpath, and public lighting along the Ballymakenny Road; new estate roads and homezones within the site; 120no. car parking spaces including both on-street and in-curtilage parking; cycle parking; hard and soft landscaping including public open spaces, playground, and private gardens; boundary treatments; ESB substation; lighting; laying of underground sewers, mains and pipes; underground pump station and attenuation tanks; and all associated works.

Plans and particulars of the housing development are available for inspection or purchase, at a fee not exceeding the reasonable cost of making a copy, at the offices of the Louth County Council as set out below and are available for inspection on the website of Louth County Council at <https://consult.louthcoco.ie/> hereafter.

Drogheda Civic Offices, Fair St, Drogheda, Co. Louth, A92 P440.

(Inspection and purchase - during public opening hours between 9.00am and 5.00pm Monday to Friday)

In accordance with Article 81A(5) of the Planning and Development Regulations 2001 as amended, Louth County Council has concluded from a preliminary examination pursuant to the provisions of article 120(1)(b)(i) of the Planning and Development Regulations 2001 as amended that there is no real likelihood of significant effects on the environment arising from the proposed development and that an Environmental Impact Assessment is not required.

In accordance with the provisions of Article 81A(6) of the Planning and Development Regulations 2001 as amended, Louth County Council has carried out a screening of the proposed development to assess, in view of best scientific knowledge, if the development, individually or in combination with other plans or projects, would be likely to have a significant effect on a European site. Accordingly, Louth County Council has determined that the proposed development would not be likely to have a significant effect on a European site.

This notice informs interested persons and parties of Louth County Council's intention to commence the proposed development no sooner than 8 weeks from the date of this notice.

Within a period of 8 weeks from the date of this notice any person may question the validity of any decision of the Planning Authority by way of an application for judicial review, under Order 84 of the Rules of the Superior Courts (S.I. No. 15 of 1986), in accordance with sections 50 and 50A of the Act.

Declan Grimes, Senior Engineer, Louth County Council.
16.04.2024

WOMAN DIAGNOSED WITH HEART FAILURE AFTER BIRTH OF FIRST CHILD BACKING APPEAL

By MARGARET RODDY

A young Co Louth mother who was diagnosed with heart failure shortly after the birth of her first child has given her backing to a new drive to bolster State funding for services provided by the Irish Heart Foundation to heart and stroke patients in Co Louth.

Primary school teacher Carmel Finnegan says that the support she receives from the Irish Heart Foundation give a reassurance that she can't find elsewhere.

It was back in 2017 that the then 33-year-old was first diagnosed with heart failure. She had returned home from Dubai with her husband Mark to give birth to their first child. After little Senan's arrival, Carmel was home for just three days when she began to feel unwell, suffering from fatigue.

She was struggling to breathe and her cough was worsening, and her blood pressure was "through the roof".

She went to Our Lady of Lourdes Hospital in Drogheda, where her lungs were checked. She was given oxygen and later had blood transfusions.

After further assessments, she was diagnosed with heart failure and spent the first few weeks of Senan's life in hospital recovering.

Following the birth of her second child, Carmel began using the Irish Heart Foundation's Nurse Support Line, the counselling service, the Facebook Group 'Heart Support Network', and she also joined the Patient Champions Programme.

"I had no expectations of the services, but I felt it was better to hear from those with real-life experience who had been through something similar," she said.

"The services and groups I am involved in are so positive and no one is ever negative, despite their diagnosis. I would absolutely recommend these services to anyone going through similar to what I did.

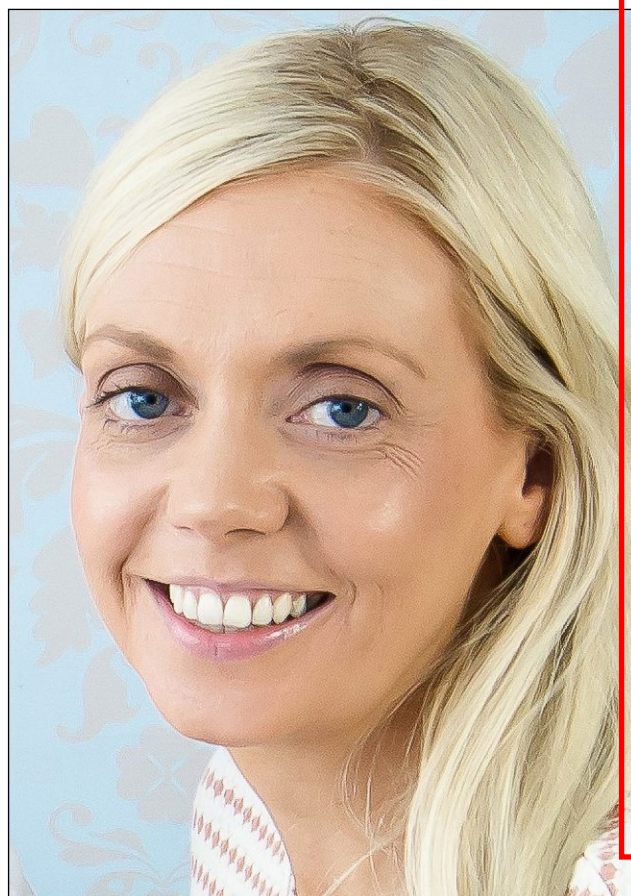
"The services give me a support no one else can give me and give me a reassurance no one else can."

Carmel is now backing a nationwide campaign which is asking people to lobby their TDs and Senators to sign a pledge to support Irish Heart Foundation patient support services - with funding vital to their continued operation.

It is estimated that 16,000 people in Louth are living with cardiovascular disease.

For many, supports provided by the charity are the only help they receive after a life-changing heart event, heart failure, stroke or other cardiac conditions.

The practical, social and



Carmel Finnegan from Dundalk says Irish Heart Foundation patient support services played a key role in her recovery.

emotional support services begin when patients leave hospital and continue for as long as they are needed.

Now local people are being encouraged to ask their local representatives to sign an online pledge on irishheart.ie/advocacy to ensure €1.2million in crucial annual funding is made available.

The Irish Heart Foundation currently receives just 8.6% of this to fund patient support services nationwide, which it says is inadequate to help the current volume of patients.

The services reduce costs for the State every year by supporting patients to continue living in their homes rather than requiring nursing home care or being readmitted to hospital - but only a fraction of this work is State-funded, says the charity's Director of Advocacy and Patient Support, Chris Macey.

"Nationally, 80,000 heart and stroke patients are discharged from hospital every year, or one every seven minutes, in many cases to a bleak and uncertain future," he said.

"One in three of all stroke patients returning home are being referred in to our services, whilst we are also supporting thousands of heart patients.

"These people cannot simply return to the lives they led before and desperately need the unique pathway of support services that the Irish Heart

Foundation provides.

"We are doing our utmost with our resources to ensure that people can make the most of life after a stroke or heart diagnosis, but we cannot guarantee continued delivery of these services."

Mr Macey says stroke patients leaving hospital often feel abandoned - and many heart failure patients end up in a revolving-door system where they need to be re-admitted.

"Our range of services, described by patients as a lifeline, reduce the need for admission to hospitals and nursing homes. A heart disease diagnosis or stroke often leads to post traumatic stress disorder.

"But the counselling we provide is the only psychological support available to many patients.

"People are denied basic services and it is appalling."

In addition to counselling, the Irish Heart Foundation provides nurse-led needs assessments, weekly support calls, back-to-work programmes, fatigue management, peer-to-peer support services, social interaction and online exercise groups. Patients also have access to a Nurse Support Line to provide medical advice.

Once they sign the pledge, elected representatives' names will appear on irishheart.ie/advocacy/ and they are also asked to share the pledge on their websites and social media.



Comhairle Contae Lú
Louth County Council

Planning and Development Act 2000, as amended Planning and Development Regulations 2001, as amended

Notice of Intention to Undertake Development by Louth County Council Under Section 179A of The Planning and Development Act, 2000 (as amended)

In accordance with the provisions of Section 179A of the Planning and Development Act 2000 (as amended) Louth County Council gives notice of its intention to carry out the following development:

The construction of 97no. houses including 12no. 2-bed bungalows, 40no. two storey 2-bed houses, 30no. two storey 3-bed houses, 13no. two storey 4-bed houses, and 2no. 3-bed bungalows on a site of 3.03 hectares in the townland of Yellowbatter at Ballymakenny Road, Drogheda, Co Louth.

The development will also include the construction of a new entrance onto the Ballymakenny Road; provision of new cycleway, footpath, and public lighting along the Ballymakenny Road; new estate roads and homezones within the site; 120no. car parking spaces including both on-street and in-curtilage parking; cycle parking; hard and soft landscaping including public open spaces, playground, and private gardens; boundary treatments; ESB substation; lighting; laying of underground sewers, mains and pipes; underground pump station and attenuation tanks; and all associated works.

Plans and particulars of the housing development are available for inspection or purchase, at a fee not exceeding the reasonable cost of making a copy, at the offices of the Louth County Council as set out below and are available for inspection on the website of Louth County Council at <https://consult.louthcoco.ie/> hereafter.

Drogheda Civic Offices, Fair St, Drogheda, Co. Louth, A92 P440.

(Inspection and purchase - during public opening hours between 9.00am and 5.00pm Monday to Friday)

In accordance with Article 81A(5) of the Planning and Development Regulations 2001 as amended, Louth County Council has concluded from a preliminary examination pursuant to the provisions of article 120(1)(b)(i) of the Planning and Development Regulations 2001 as amended that there is no real likelihood of significant effects on the environment arising from the proposed development and that an Environmental Impact Assessment is not required.

In accordance with the provisions of Article 81A(6) of the Planning and Development Regulations 2001 as amended, Louth County Council has carried out a screening of the proposed development to assess, in view of best scientific knowledge, if the development, individually or in combination with other plans or projects, would be likely to have a significant effect on a European site. Accordingly, Louth County Council has determined that the proposed development would not be likely to have a significant effect on a European site.

This notice informs interested persons and parties of Louth County Council's intention to commence the proposed development no sooner than 8 weeks from the date of this notice.

Within a period of 8 weeks from the date of this notice any person may question the validity of any decision of the Planning Authority by way of an application for judicial review, under Order 84 of the Rules of the Superior Courts (S.I. No. 15 of 1986), in accordance with sections 50 and 50A of the Act.

**Declan Grimes, Senior Engineer, Louth County Council.
16.04.2024**

Planning and Development Act 2000, as amended Planning and Development Regulations 2001, as amended

Notice of Intention to Undertake Development by Louth County Council Under Section 179A of The Planning and Development Act, 2000 (as amended)

In accordance with the provisions of Section 179A of the Planning and Development Act 2000 (as amended) Louth County Council gives notice of its intention to carry out the following development:

The construction of 58no. houses including 8no. 2-bed bungalows, 20no. two storey 2-bed houses, 24no. two storey 3-bed houses, 5no. two storey 4-bed houses, and 1no. 5-bed bungalow, on a site of 3.54 hectares in the townland of Mullavally, Louth Village, Co. Louth.

The development will also include the construction of a new entrance onto the R171; provision of new cycleway, footpath, and public lighting along the boundary with the R171; new estate roads and homezones within the site; 109no. car parking spaces including both on-street and in-curtilage parking; cycle parking; hard and soft landscaping including public open spaces, playground, and private gardens; boundary treatments; ESB substation; lighting; laying of underground sewers, mains and pipes; underground attenuation tank; and all associated works.

Plans and particulars of the housing development are available for inspection or purchase, at a fee not exceeding the reasonable cost of making a copy, at the offices of the Louth County Council as set out below and are available for inspection on the website of Louth County Council at <https://consult.louthcoco.ie/> hereafter.

Mid Louth Civic Services Centre, Fair Green, Ardee, Co. Louth, A92 RYT2.

(Inspection and purchase - during public opening hours between 9.00am and 5.00pm Monday to Friday)

In accordance with Article 81A(5) of the Planning and Development Regulations 2001 as amended, Louth County Council has concluded from a preliminary examination pursuant to the provisions of article 120(1)(b)(i) of the Planning and Development Regulations 2001 as amended that there is no real likelihood of significant effects on the environment arising from the proposed development and that an Environmental Impact Assessment is not required.

In accordance with the provisions of Article 81A(6) of the Planning and Development Regulations 2001 as amended, Louth County Council has carried out a screening of the proposed development to assess, in view of best scientific knowledge, if the development, individually or in combination with other plans or projects, would be likely to have a significant effect on a European site. Accordingly, Louth County Council has determined that the proposed development would not be likely to have a significant effect on a European site.

This notice informs interested persons and parties of Louth County Council's intention to commence the proposed development no sooner than 8 weeks from the date of this notice.

Within a period of 8 weeks from the date of this notice any person may question the validity of any decision of the Planning Authority by way of an application for judicial review, under Order 84 of the Rules of the Superior Courts (S.I. No. 15 of 1986), in accordance with sections 50 and 50A of the Act.

**Declan Grimes, Senior Engineer, Louth County Council.
16.04.2024**

County Hall, Millennium Centre, Dundalk, County Louth A91 KFW6
t 042 9335457 w www.louthcoco.ie e info@louthcoco.ie
View Alerts at www.mapalserter.ie/louth



Comhairle Contae Lú
Louth County Council

Planning and Development Act 2000, as amended Planning and Development Regulations 2001, as amended

Notice of Intention to Undertake Development by Louth County Council Under Section 179A of The Planning and Development Act, 2000 (as amended)

In accordance with the provisions of Section 179A of the Planning and Development Act 2000 (as amended) Louth County Council gives notice of its intention to carry out the following development:

The construction of 97no. houses including 12no. 2-bed bungalows, 40no. two storey 2-bed houses, 30no. two storey 3-bed houses, 13no. two storey 4-bed houses, and 2no. 3-bed bungalows on a site of 3.03 hectares in the townland of Yellowbatter at Ballymakenny Road, Drogheda, Co Louth.

The development will also include the construction of a new entrance onto the Ballymakenny Road; provision of new cycleway, footpath, and public lighting along the Ballymakenny Road; new estate roads and homezones within the site; 120no. car parking spaces including both on-street and in-curtilage parking; cycle parking; hard and soft landscaping including public open spaces, playground, and private gardens; boundary treatments; ESB substation; lighting; laying of underground sewers, mains and pipes; underground pump station and attenuation tanks; and all associated works.

Plans and particulars of the housing development are available for inspection or purchase, at a fee not exceeding the reasonable cost of making a copy, at the offices of the Louth County Council as set out below and are available for inspection on the website of Louth County Council at <https://consult.louthcoco.ie/> hereafter.

Drogheda Civic Offices, Fair St, Drogheda, Co. Louth, A92 P440.

(Inspection and purchase - during public opening hours between 9.00am and 5.00pm Monday to Friday)

In accordance with Article 81A(5) of the Planning and Development Regulations 2001 as amended, Louth County Council has concluded from a preliminary examination pursuant to the provisions of article 120(1)(b)(i) of the Planning and Development Regulations 2001 as amended that there is no real likelihood of significant effects on the environment arising from the proposed development and that an Environmental Impact Assessment is not required.

In accordance with the provisions of Article 81A(6) of the Planning and Development Regulations 2001 as amended, Louth County Council has carried out a screening of the proposed development to assess, in view of best scientific knowledge, if the development, individually or in combination with other plans or projects, would be likely to have a significant effect on a European site. Accordingly, Louth County Council has determined that the proposed development would not be likely to have a significant effect on a European site.

This notice informs interested persons and parties of Louth County Council's intention to commence the proposed development no sooner than 8 weeks from the date of this notice.

Within a period of 8 weeks from the date of this notice any person may question the validity of any decision of the Planning Authority by way of an application for judicial review, under Order 84 of the Rules of the Superior Courts (S.I. No. 15 of 1986), in accordance with sections 50 and 50A of the Act.

**Declan Grimes, Senior Engineer, Louth County Council.
16.04.2024**

Planning and Development Act 2000, as amended Planning and Development Regulations 2001, as amended

Notice of Intention to Undertake Development by Louth County Council Under Section 179A of The Planning and Development Act, 2000 (as amended)

In accordance with the provisions of Section 179A of the Planning and Development Act 2000 (as amended) Louth County Council gives notice of its intention to carry out the following development:

The construction of 58no. houses including 8no. 2-bed bungalows, 20no. two storey 2-bed houses, 24no. two storey 3-bed houses, 5no. two storey 4-bed houses, and 1no. 5-bed bungalow, on a site of 3.54 hectares in the townland of Mullavally, Louth Village, Co. Louth.

The development will also include the construction of a new entrance onto the R171; provision of new cycleway, footpath, and public lighting along the boundary with the R171; new estate roads and homezones within the site; 109no. car parking spaces including both on-street and in-curtilage parking; cycle parking; hard and soft landscaping including public open spaces, playground, and private gardens; boundary treatments; ESB substation; lighting; laying of underground sewers, mains and pipes; underground attenuation tank; and all associated works.

Plans and particulars of the housing development are available for inspection or purchase, at a fee not exceeding the reasonable cost of making a copy, at the offices of the Louth County Council as set out below and are available for inspection on the website of Louth County Council at <https://consult.louthcoco.ie/> hereafter.

Mid Louth Civic Services Centre, Fair Green, Ardee, Co. Louth, A92 RYT2.

(Inspection and purchase - during public opening hours between 9.00am and 5.00pm Monday to Friday)

In accordance with Article 81A(5) of the Planning and Development Regulations 2001 as amended, Louth County Council has concluded from a preliminary examination pursuant to the provisions of article 120(1)(b)(i) of the Planning and Development Regulations 2001 as amended that there is no real likelihood of significant effects on the environment arising from the proposed development and that an Environmental Impact Assessment is not required.

In accordance with the provisions of Article 81A(6) of the Planning and Development Regulations 2001 as amended, Louth County Council has carried out a screening of the proposed development to assess, in view of best scientific knowledge, if the development, individually or in combination with other plans or projects, would be likely to have a significant effect on a European site. Accordingly, Louth County Council has determined that the proposed development would not be likely to have a significant effect on a European site.

This notice informs interested persons and parties of Louth County Council's intention to commence the proposed development no sooner than 8 weeks from the date of this notice.

Within a period of 8 weeks from the date of this notice any person may question the validity of any decision of the Planning Authority by way of an application for judicial review, under Order 84 of the Rules of the Superior Courts (S.I. No. 15 of 1986), in accordance with sections 50 and 50A of the Act.

**Declan Grimes, Senior Engineer, Louth County Council.
16.04.2024**

County Hall, Millennium Centre, Dundalk, County Louth A91 KFW6
t 042 9335457 w www.louthcoco.ie e info@louthcoco.ie
View Alerts at www.mapalarter.ie/louth



Cllr. Bernie Conlon with her parents Peter and Connie McArdle at the launch of her election campaign in Dunleer. Photo: Colin Bell Photography

Bernie Conlon hoping to build upon late husband Hugh's legacy in Dunleer

By JOHN MULLIGAN

CO-OPTED on to Louth County Council after the untimely passing of her husband Independent Councillor Hugh D Conlon in September 2021, Bernie Conlon launched her campaign to be re-elected in the upcoming local elections.

"Hugh worked tirelessly for the people of Louth for over three decades", says a proud Bernie Conlon.

"I have been living in Dunleer since I was born, where I run a small business. I have been community focussed all my life and an active member of Tidy Tows, the Dunleer Market House and the Darkness in to Light committee".

Speaking of some of her hard work since becoming a member of Louth County Council, she pointed to getting Louth County Council to repaint the Dunleer Library and the work she has put into getting a new premises on the Main Street for the new Library.

"I am the Mid Louth representative on the

Dublin Belfast Economic Corridor Forum and I am on the Joint Policing Committee, and on the Strategic Policy Committee for infrastructure and Planning in the Council".

"Although only a relatively new Councillor I feel I am well aware of the structures, procedures and protocols of the Council and how it works and the issues that the public have".

"I have campaigned and canvassed for decades with my late husband Hugh on many issues like the importance and relevance of the necessity for the re-opening of the Dunleer Train Station".

Other issues that she focuses on are social and affordable housing adding "I want to try and ensure our senior citizens feel protected valued and safe in our County".

"I'm a proud Independent Councillor for Mid and County Louth and I am determined to try my best and hopefully that I will be elected and get the opportunity to continue serving the people of Louth over the next five years".

LEO mission to cut energy bills

"Is old and outdated equipment ramping up your energy bills? Could modern lighting, energy controls, fridges, ovens or manufacturing equipment bring down your energy consumption and costs? Maybe our Energy Efficiency Grant can help your business" explains Pamela Kerr (pictured) of Louth's Local Enterprise Office.

The Energy Efficiency Grant is designed to support local companies who are seeking to reduce energy consumption and lower their carbon footprint.

"The scheme allows business owners to access up to €5,000 of matched funding towards the cost of new equipment. Manufacturing companies have used it to invest in new production equipment. Cafes have used it for new ovens, dishwashers or fridges. Shopkeepers have used the grant to fund new lighting to reduce their energy usage, while other business owners have used it to replace outdated heating and cooling systems and install controls for greater efficiency" Pamela continues.

"The Energy Efficiency Grant is open to

businesses who have had an SEAI Energy Audit or companies that have taken part in the LEO Green for Micro or Green Start programmes. There are terms and conditions, but nothing too complex, and our team is here to help you with your application. Call us today on 042 933 5457 and let us guide you through the next steps."

She adds that if you have taken part in Green for Micro in the last three years or have completed an SEAI Energy Audit, you may be eligible for an Energy Efficiency Grant, which could help you to invest in new equipment or systems to drive sustainability and reduce energy consumption in your business.

"These are just some of the supports available to business owners across Louth

from the Local Enterprise Office, part of Louth County Council," Pamela concludes. "To discover more, visit www.localenterprise.ie/louth or book a free online appointment in the Business Advice Clinic to talk to one of our expert advisors about the supports available to you."

