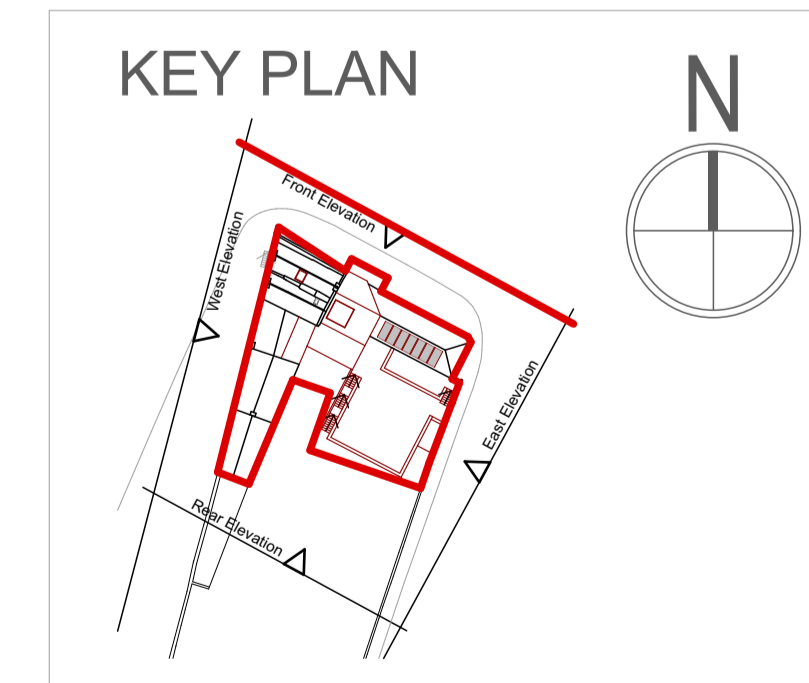


- KEY**
- A. Exposed Stone Masonry
 - B. Render
 - C. Slate
 - D. Timber Window
 - E. Plaster Shopfront
 - F. Vegetation
 - G. Sign
 - H. Brick
 - I. Masonry Buttress

- KEY**
- Existing Fabric
 - Enabling Alterations to Existing Building Fabric
 - Site Boundary

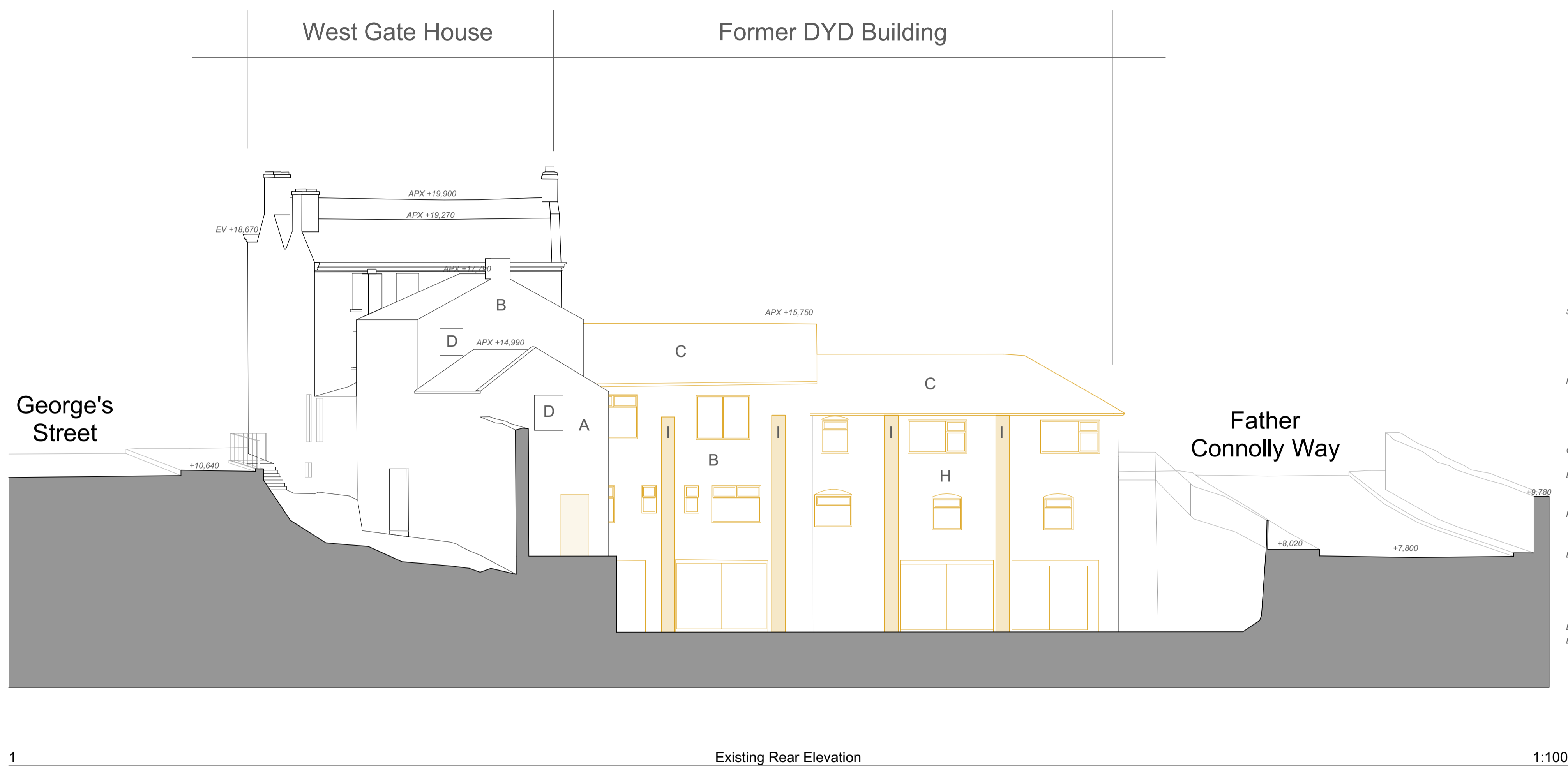


Integrated Design Team: **Shaffrey Architects, RIAI Grade 1 Conservation Architects**
 Barrett Mahony Consulting Engineers
 ORS Mechanical & Electrical Engineering
 Doyle Kent Planning Partnership Ltd
 IAC Archaeology
 Altemar Environmental Consultants
 Workhouse Union

SHAFFREY ARCHITECTS
 RIAI Grade 1 Conservation Architects
 29 Lower Ormond Quay, Dublin 1
 D01 H299
 e + studio@shaffrey.ie
 t + 353 (1) 8725602

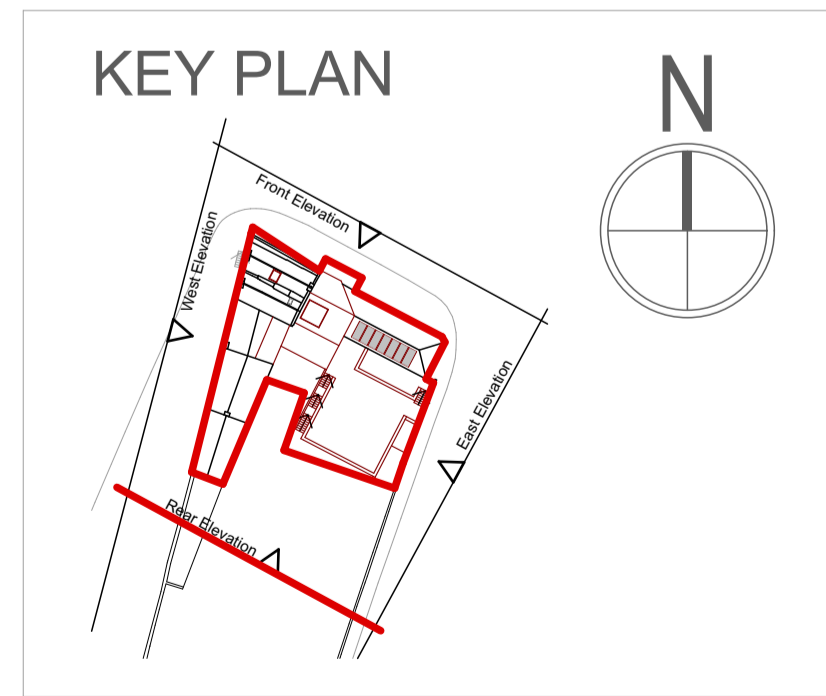
Client: **Louth County Council**
 County Hall, Millennium Centre
 Dundalk, A91 KFW6
 Date: March 2025
 Scale: 1:100, 1:1000 @ A1
 Drawn By: AR
 Checked by: EK

Project: **WEST GATE HOUSE**
 Westgate House and Drogheda Youth Development Building
 Refurbishment and Extension, West Street, Moneymore, Drogheda
 Drawing Title: **Existing Front Elevation**
 DWG NO.: **002.3.1**
 Issue: **Part 8 Planning**



- KEY**
- A. Exposed Stone Masonry
 - B. Render
 - C. Slate
 - D. Timber Window
 - E. Plaster Shopfront
 - F. Vegetation
 - G. Sign
 - H. Brick
 - I. Masonry Buttress

- KEY**
- Existing Fabric
 - Enabling Alterations to Existing Building Fabric
 - Site Boundary

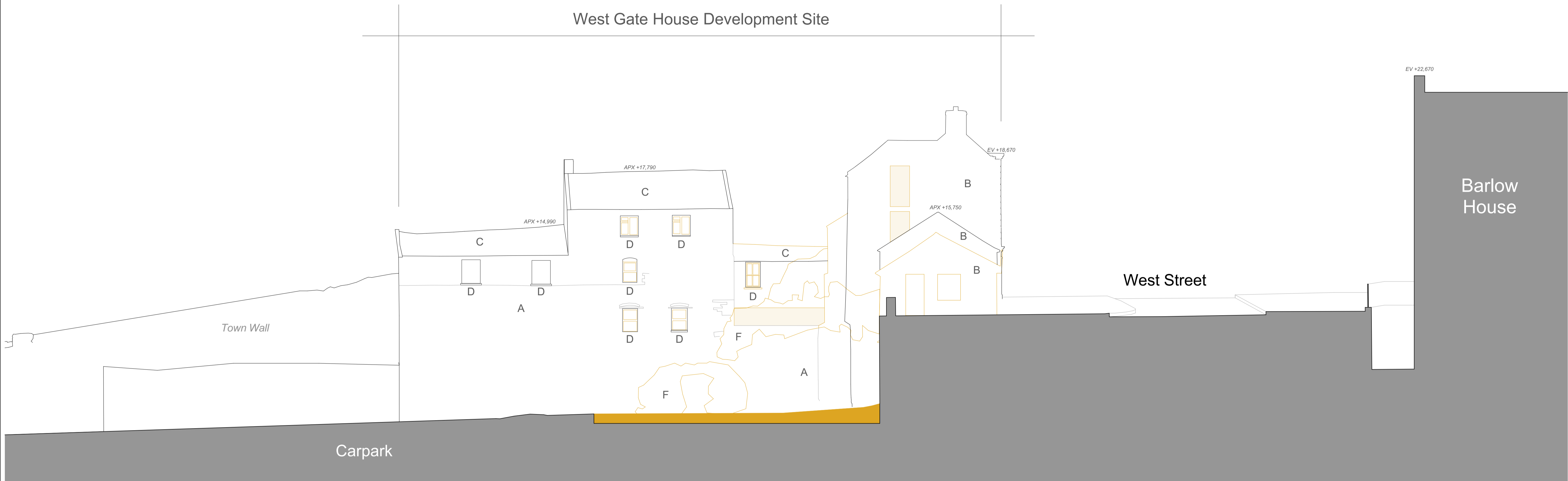


Integrated Design Team: Shaffrey Architects, RIAI Grade 1 Conservation Architects
 Barrett Mahony Consulting Engineers
 ORS Mechanical & Electrical Engineering
 Doyle Kent Planning Partnership Ltd
 IAC Archaeology
 Altamar Environmental Consultants
 Workhouse Union

SHAFFREY ARCHITECTS
 RIAI Grade 1 Conservation Architects
 29 Lower Ormond Quay, Dublin 1
 D01 H299
 e + studio@shaffrey.ie
 t + 353 (1) 8725602

Client: Louth County Council
 County Hall, Millennium Centre
 Dundalk, A91 KFW6
 Date: March 2025
 Scale: 1:100, 1:1000 @ A1
 Drawn By: AR
 Checked by: EK

Project: **WEST GATE HOUSE**
 Westgate House and Drogheda Youth Development Building
 Refurbishment and Extension, West Street, Moneymore, Drogheda
 Drawing Title: **Existing Rear Elevation**
 DWG NO.: **002.3.2**
 Issue: **Part 8 Planning**



Existing East Elevation

1

1:100

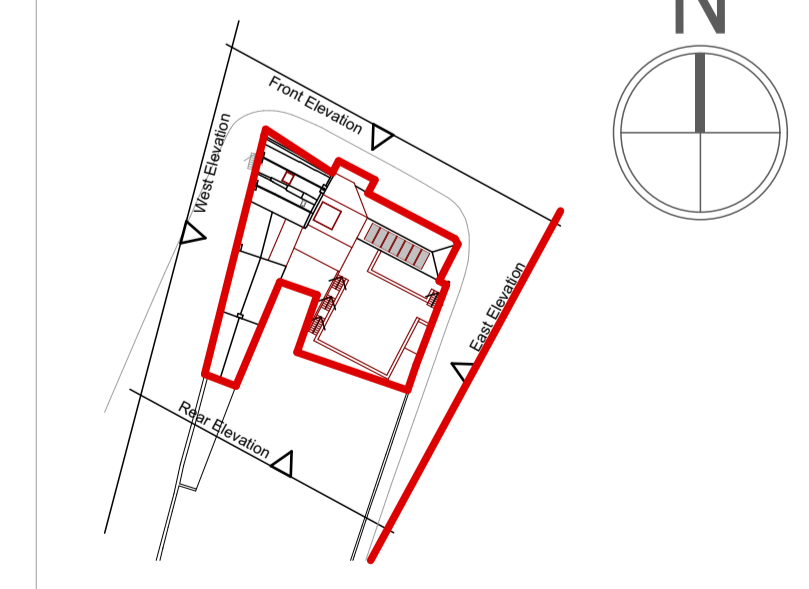
KEY

- A. Exposed Stone Masonry
- B. Render
- C. Slate
- D. Timber Window
- E. Plaster Shopfront
- F. Vegetation
- G. Sign
- H. Brick
- I. Masonry Buttress

KEY

- Existing Fabric
- Enabling Alterations to Existing Building Fabric
- Site Boundary

KEY PLAN



Integrated Design Team: **Shaffrey Architects, RIAI Grade 1 Conservation Architects**
 Barrett Mahony Consulting Engineers
 ORS Mechanical & Electrical Engineering
 Doyle Kent Planning Partnership Ltd
 IAC Archaeology
 Altemar Environmental Consultants
 Workhouse Union

SHAFFREY ARCHITECTS

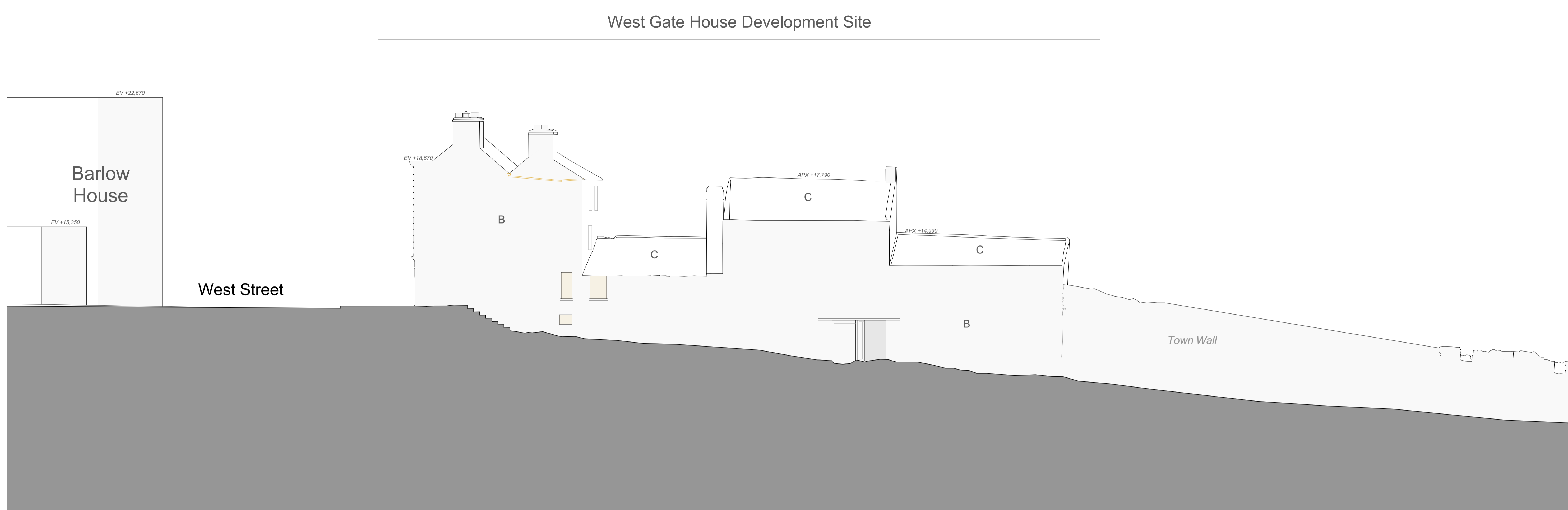
RIAI Grade 1 Conservation Architects
 29 Lower Ormond Quay, Dublin 1
 D01 H299
 e + studio@shaffrey.ie
 t + 353 (1) 8725602

Client: Louth County Council
 County Hall, Millennium Centre
 Dundalk, A91 KFW6
 Date: March 2025
 Scale: 1:1000, 1:100 @ A1
 Drawn By: AR
 Checked by: EK

Project: **WEST GATE HOUSE**
 Westgate House and Drogheda Youth Development Building
 Refurbishment and Extension, West Street, Moneymore, Drogheda

Drawing Title: **Existing East Elevation**
 DWG NO.: **002.3.3**
 Issue: **Part 8 Planning**

West Gate House Development Site



1




Existing West Elevation

1:100

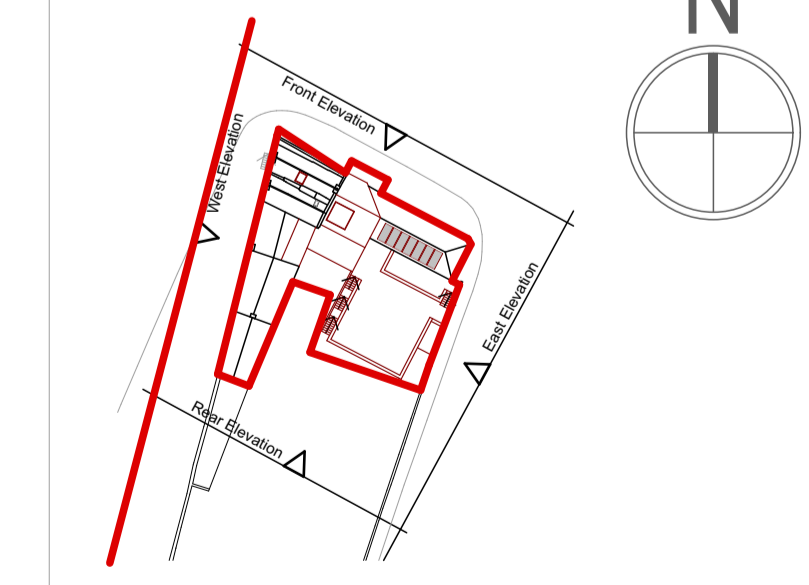
KEY

- A. Exposed Stone Masonry
- B. Render
- C. Slate
- D. Timber Window
- E. Plaster Shopfront
- F. Vegetation
- G. Sign
- H. Brick
- I. Masonry Buttress

KEY

-  Existing Fabric
-  Enabling Alterations to Existing Building Fabric
-  Site Boundary

KEY PLAN



Integrated Design Team: Shaffrey Architects, RIAI Grade 1 Conservation Architects

Barrett Mahony Consulting Engineers
ORS Mechanical & Electrical Engineering
Doyle Kent Planning Partnership Ltd
IAC Archaeology
Altemar Environmental Consultants
Workhouse Union

SHAFFREY ARCHITECTS
RIAI Grade 1 Conservation Architects

29 Lower Ormond Quay, Dublin 1
D01 H299
e + studio@shaffrey.ie
t + 353 (1) 8725602

Client:

Louth County Council
County Hall, Millennium Centre
Dundalk, A91 KFW6

Date : March 2025
Scale : 1:1000, 1:100 @ A1
Drawn By : AR
Checked by : EK

Project:

WEST GATE HOUSE
Westgate House and Drogheda Youth Development Building
Refurbishment and Extension, West Street, Moneymore, Drogheda

Drawing Title: Existing West Elevation

DWG NO.: **002.3.4**
Issue: Part 8 Planning