

KEY

- Existing Fabric
- New Fabric
- Circulation Spaces
- Site Boundary

KEY

1. Entrance Hall
2. Café/Reception
3. Community / Makers Space / Education Space
4. Event / Workshop / Performance Space
5. Ancillary Support Space
6. Podium Roof Garden
7. Terrace
8. Void
9. Consultation / Meeting Room
10. Office
11. Staff
12. WC
13. Plant
14. Storage
15. External paved area with integrated bench seat

1 Proposed Basement Plan 1:100



Integrated Design Team:
 Shaffrey Architects, RIAI Grade 1 Conservation Architects
 Barrett Mahony Consulting Engineers
 ORS Mechanical & Electrical Engineering
 Doyle Kent Planning Partnership Ltd
 IAC Archaeology
 Altamar Environmental Consultants
 Workhouse Union

SHAFFREY ARCHITECTS
 RIAI Grade 1 Conservation Architects
 29 Lower Ormond Quay, Dublin 1
 D01 H299
 e + studio@shaffrey.ie
 t + 353 (1) 8725602

Client: Louth County Council
 County Hall, Millennium Centre
 Dundalk, A91 KFW6
 Date: March 2025
 Scale: 1:100 @ A1
 Drawn By: AR
 Checked by: EK

Project: WEST GATE HOUSE
 Westgate House and Drogheda Youth Development Building
 Refurbishment and Extension, West Street, Moneymore, Drogheda
 Drawing Title: Proposed Basement Floor Plan
 DWG NO.: 003.1.1
 Issue: Part 8 Planning



KEY

- Existing Fabric
- New Fabric
- Circulation Spaces
- Site Boundary

KEY

1. Entrance Hall
2. Café/Reception
3. Community / Makers Space / Education Space
4. Event / Workshop / Performance Space
5. Ancillary Support Space
6. Podium Roof Garden
7. Terrace
8. Void
9. Consultation / Meeting Room
10. Office
11. Staff
12. WC
13. Plant
14. Storage
15. External paved area with integrated bench seat

1 Proposed Podium Level Plan 1:100

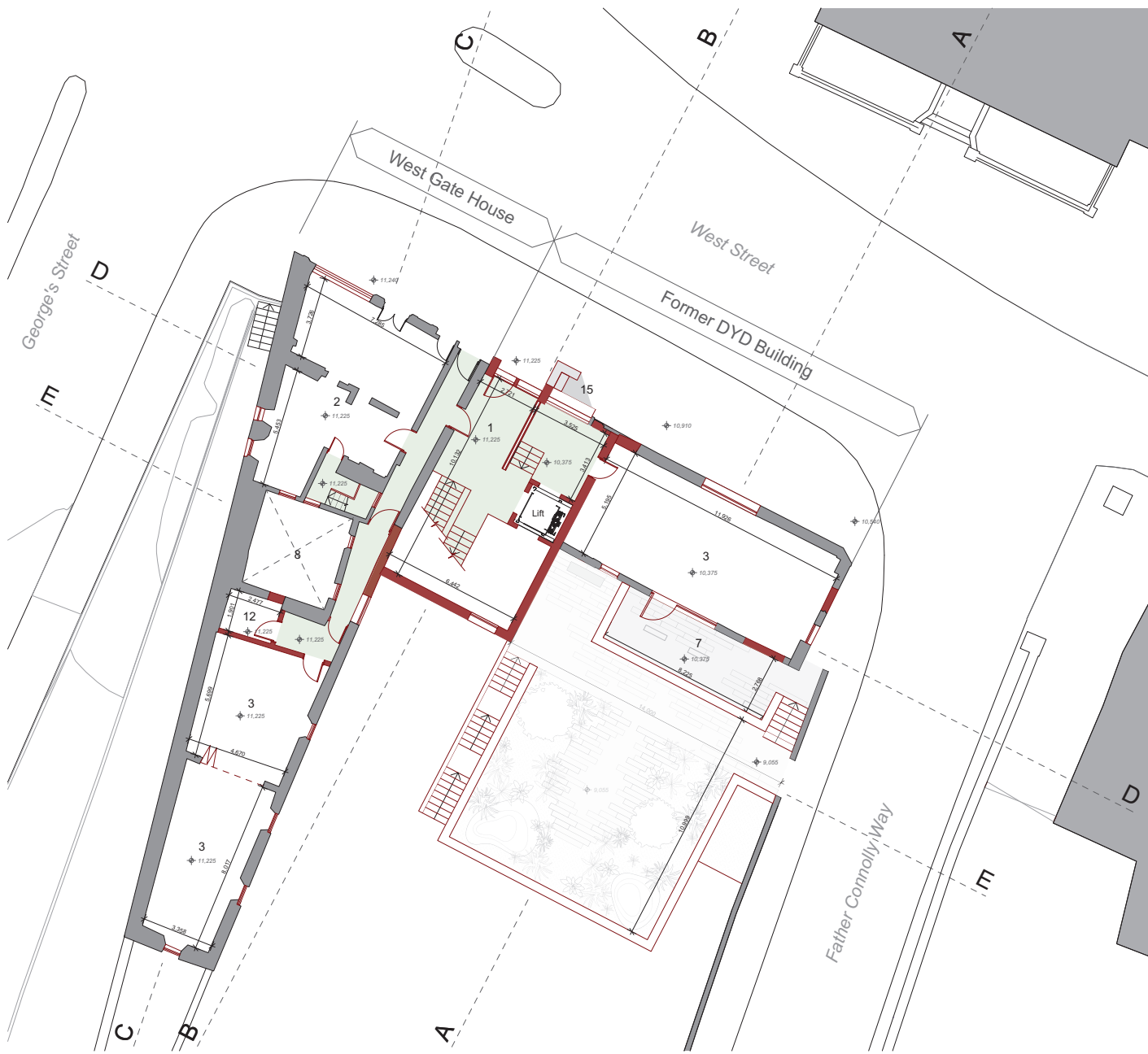
Integrated Design Team: Shaffrey Architects, RIAI Grade 1 Conservation Architects
 Barrett Mahony Consulting Engineers
 ORS Mechanical & Electrical Engineering
 Doyle Kent Planning Partnership Ltd
 IAC Archaeology
 Altamar Environmental Consultants
 Workhouse Union



SHAFFREY ARCHITECTS
 RIAI Grade 1 Conservation Architects
 29 Lower Ormond Quay, Dublin 1
 D01 H299
 e + studio@shaffrey.ie
 t + 353 (1) 8725602

Client: Louth County Council
 County Hall, Millennium Centre
 Dundalk, A91 KFW6
 Date: March 2025
 Scale: 1:100 @ A1
 Drawn By: AR
 Checked by: EK

Project: WEST GATE HOUSE
 Westgate House and Drogheda Youth Development Building
 Refurbishment and Extension, West Street, Moneymore, Drogheda
 Drawing Title: Proposed Podium Level Plan
 DWG NO.: 003.1.2
 Issue: Part 8 Planning




KEY

- Existing Fabric
- New Fabric
- Circulation Spaces
- Site Boundary

KEY

1. Entrance Hall
2. Café/Reception
3. Community / Makers Space / Education Space
4. Event / Workshop / Performance Space
5. Ancillary Support Space
6. Podium Roof Garden
7. Terrace
8. Void
9. Consultation / Meeting Room
10. Office
11. Staff
12. WC
13. Plant
14. Storage
15. External paved area with integrated bench seat

1 Proposed Ground Floor Plan 1:100



Comhairle Contae Lú
Louth County Council

Integrated Design Team: Shaffrey Architects, RIAI Grade 1 Conservation Architects
 Barrett Mahony Consulting Engineers
 ORS Mechanical & Electrical Engineering
 Doyle Kent Planning Partnership Ltd
 IAC Archaeology
 Altamar Environmental Consultants
 Workhouse Union

SHAFFREY ARCHITECTS
 RIAI Grade 1 Conservation Architects
 29 Lower Ormond Quay, Dublin 1
 D01 H299
 e + studio@shaffrey.ie
 t + 353 (1) 8725602

Client: Louth County Council
 County Hall, Millennium Centre
 Dundalk, A91 KFW6

Date: March 2025
Scale: 1:100 @ A1
Drawn By: AR
Checked by: EK

Project: WEST GATE HOUSE
 Westgate House and Drogheda Youth Development Building
 Refurbishment and Extension, West Street, Moneymore, Drogheda

Drawing Title: Proposed Ground Floor Plan
DWG NO.: 003.1.3
Issue: Part 8 Planning



KEY

- Existing Fabric
- New Fabric
- Circulation Spaces
- Site Boundary

KEY

1. Entrance Hall
2. Café/Reception
3. Community / Makers Space / Education Space
4. Event / Workshop / Performance Space
5. Ancillary Support Space
6. Podium Roof Garden
7. Terrace
8. Void
9. Consultation / Meeting Room
10. Office
11. Staff
12. WC
13. Plant
14. Storage
15. External paved area with integrated bench seat

1 Proposed First Floor Plan 1:100

Comhairle Contae Lú
Louth County Council

Integrated Design Team: Shaffrey Architects, RIAI Grade 1 Conservation Architects
 Barrett Mahony Consulting Engineers
 ORS Mechanical & Electrical Engineering
 Doyle Kent Planning Partnership Ltd
 IAC Archaeology
 Altamar Environmental Consultants
 Workhouse Union

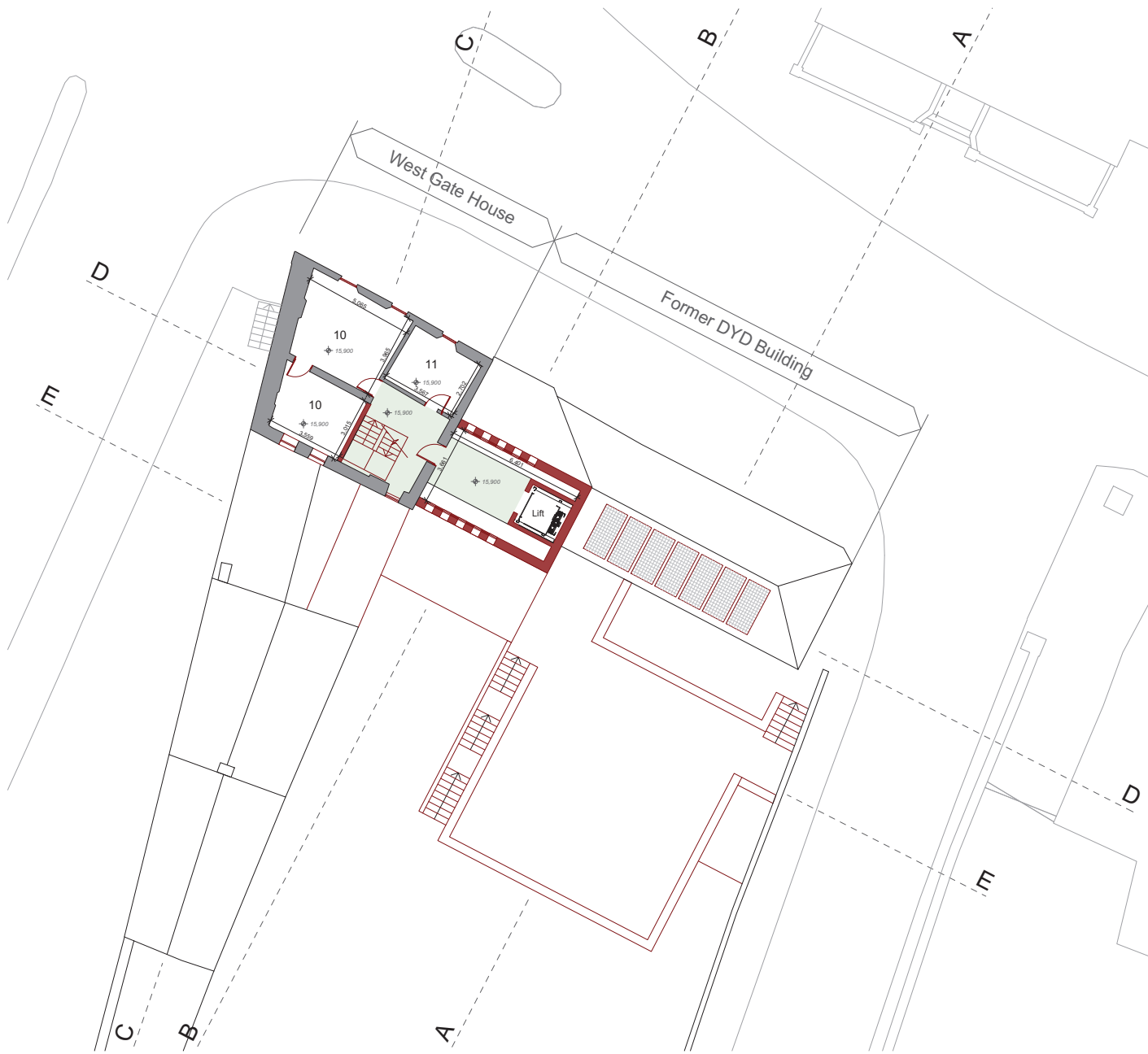
SHAFFREY ARCHITECTS
 RIAI Grade 1 Conservation Architects
 29 Lower Ormond Quay, Dublin 1
 D01 H299
 e + studio@shaffrey.ie
 t + 353 (1) 8725602

Client: Louth County Council
 County Hall, Millennium Centre
 Dundalk, A91 KFW6

Date: March 2025
Scale: 1:100 @ A1
Drawn By: AR
Checked by: EK

Project: **WEST GATE HOUSE**
 Westgate House and Drogheda Youth Development Building
 Refurbishment and Extension, West Street, Moneymore, Drogheda

Drawing Title: Proposed First Floor Plan
DWG NO.: 003.1.4
Issue: Part 8 Planning



KEY

- Existing Fabric
- New Fabric
- Circulation Spaces
- Site Boundary

KEY

1. Entrance Hall
2. Café/Reception
3. Community / Makers Space / Education Space
4. Event / Workshop / Performance Space
5. Ancillary Support Space
6. Podium Roof Garden
7. Terrace
8. Void
9. Consultation / Meeting Room
10. Office
11. Staff
12. WC
13. Plant
14. Storage
15. External paved area with integrated bench seat

Proposed Second Floor Plan 1:100



Integrated Design Team:
 Shaffrey Architects, RIAI Grade 1 Conservation Architects
 Barrett Mahony Consulting Engineers
 ORS Mechanical & Electrical Engineering
 Doyle Kent Planning Partnership Ltd
 IAC Archaeology
 Altamar Environmental Consultants
 Workhouse Union

SHAFFREY ARCHITECTS
 RIAI Grade 1 Conservation Architects
 29 Lower Ormond Quay, Dublin 1
 D01 H299
 e + studio@shaffrey.ie
 t + 353 (1) 8725602

Client: Louth County Council
 County Hall, Millennium Centre
 Dundalk, A91 KFW6
 Date: March 2025
 Scale: 1:100 @ A1
 Drawn By: AR
 Checked by: EK

Project: **WEST GATE HOUSE**
 Westgate House and Drogheda Youth Development Building
 Refurbishment and Extension, West Street, Moneymore, Drogheda
 Drawing Title: **Proposed Second Floor Plan**
 DWG NO.: **003.1.5**
 Issue: **Part 8 Planning**



KEY

- Existing Fabric
- New Fabric
- Circulation Spaces
- Site Boundary

KEY

1. Entrance Hall
2. Café/Reception
3. Community / Makers Space / Education Space
4. Event / Workshop / Performance Space
5. Ancillary Support Space
6. Podium Roof Garden
7. Terrace
8. Void
9. Consultation / Meeting Room
10. Office
11. Staff
12. WC
13. Plant
14. Storage
15. External paved area with integrated bench seat

1 Proposed Roof Plan 1:100

Comhairle Contae Lú
Louth County Council

Integrated Design Team: Shaffrey Architects, RIAI Grade 1 Conservation Architects
 Barrett Mahony Consulting Engineers
 ORS Mechanical & Electrical Engineering
 Doyle Kent Planning Partnership Ltd
 IAC Archaeology
 Altamar Environmental Consultants
 Workhouse Union

SHAFFREY ARCHITECTS
RIAI Grade 1 Conservation Architects
 29 Lower Ormond Quay, Dublin 1
 D01 H299
 e + studio@shaffrey.ie
 t + 353 (1) 8725602

Client: Louth County Council
 County Hall, Millennium Centre
 Dundalk, A91 KFW6

Date: March 2025
Scale: 1:100 @ A1
Drawn By: AR
Checked by: EK

Project: **WEST GATE HOUSE**
 Westgate House and Drogheda Youth Development Building
 Refurbishment and Extension, West Street, Moneymore, Drogheda

Drawing Title: Proposed Roof Plan
DWG NO.: 003.1.6
Issue: Part 8 Planning