



1 Proposed Building Section A-A 1:100

KEY

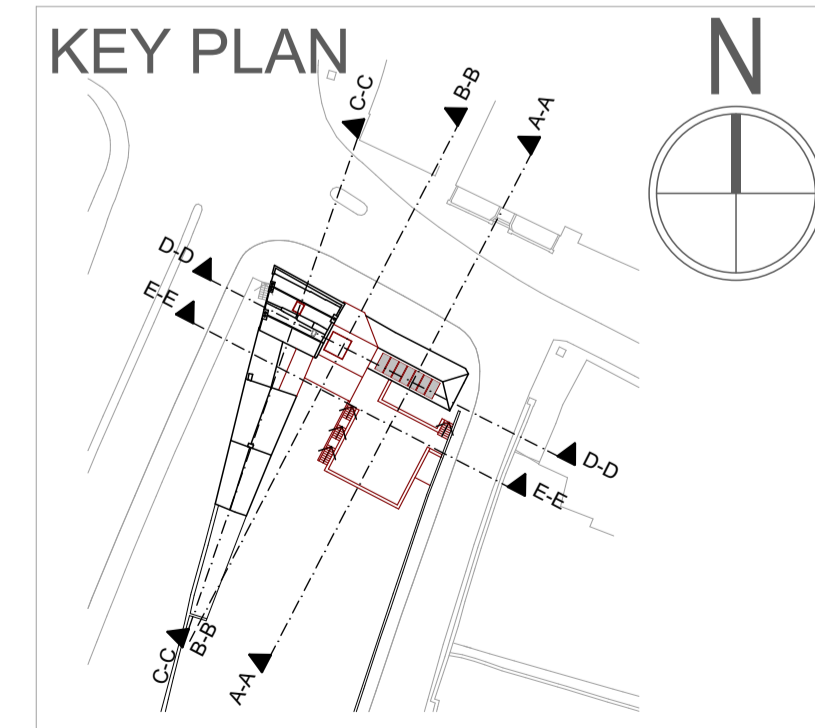
- 1. Entrance Hall
- 2. Café/Reception
- 3. Community / Makers Space / Education Space
- 4. Event / Workshop / Performance Space
- 5. Ancillary Support Space
- 6. Podium Roof Garden
- 7. Terrace
- 8. Void
- 9. Consultation / Meeting Room
- 10. Office
- 11. Staff
- 12. WC
- 13. Plant
- 14. Storage
- 15. External paved area with integrated bench seat

KEY

- A. Formation of new opening with new glazed window system
- B. Raised roof with roof renewal works
- C. Render renewal
- D. Shopfront repair and conservation
- E. Render refurbishment
- F. Roof renewal/refurbishment
- G. Chimney stack refurbishment
- H. External masonry cladding
- I. Metal/timber glazed entrance screen
- J. Window refurbishment
- K. Window glazing system
- L. Exposed masonry refurbishment
- M. Metal railing
- N. Perforated/louvred metal screen
- O. Exposed masonry
- P. Render renewal and/or masonry refurbishment

KEY

- Existing Fabric
- New Fabric
- Enabling Alterations to Existing Building Fabric
- Circulation Spaces



Integrated Design Team: Shaffrey Architects, RIAI Grade 1 Conservation Architects
 Barrett Mahony Consulting Engineers
 ORS Mechanical & Electrical Engineering
 Doyle Kent Planning Partnership Ltd
 IAC Archaeology
 Altamar Environmental Consultants
 Workhouse Union

SHAFFREY ARCHITECTS
 RIAI Grade 1 Conservation Architects
 29 Lower Ormond Quay, Dublin 1
 D01 H299
 e + studio@shaffrey.ie
 t + 353 (1) 8725602

Client: Louth County Council
 County Hall, Millennium Centre
 Dundalk, A91 KFW6
 Date: March 2025
 Scale: 1:100, 1:1000 @ A1
 Drawn By: AR
 Checked by: EK

Project: **WEST GATE HOUSE**
 Westgate House and Drogheda Youth Development Building
 Refurbishment and Extension, West Street, Moneymore, Drogheda
 Drawing Title: Proposed Section A-A
 DWG NO.: **003.2.1**
 Issue: Part 8 Planning



1 Proposed Building Section B-B 1:100

KEY

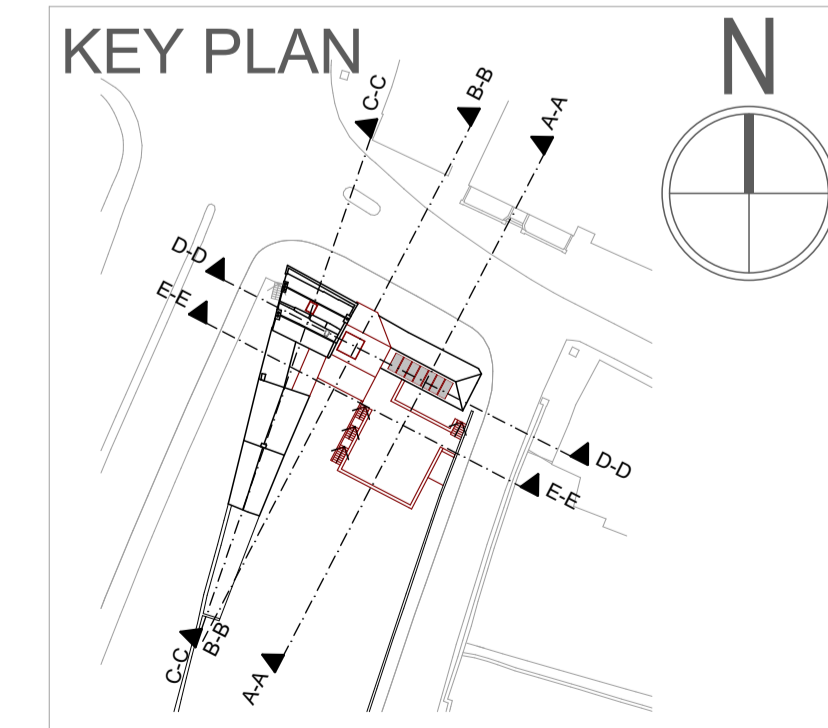
- | | |
|---|--|
| 1. Entrance Hall | 9. Consultation / Meeting Room |
| 2. Café/Reception | 10. Office |
| 3. Community / Makers Space / Education Space | 11. Staff |
| 4. Event / Workshop / Performance Space | 12. WC |
| 5. Ancillary Support Space | 13. Plant |
| 6. Podium Roof Garden | 14. Storage |
| 7. Terrace | 15. External paved area with integrated bench seat |
| 8. Void | |

KEY

- | | |
|---|--|
| A. Formation of new opening with new glazed window system | I. Metal/timber glazed entrance screen |
| B. Raised roof with roof renewal works | J. Window refurbishment |
| C. Render renewal | K. Window glazing system |
| D. Shopfront repair and conservation | L. Exposed masonry refurbishment |
| E. Render refurbishment | M. Metal railing |
| F. Roof renewal/refurbishment | N. Perforated/louvred metal screen |
| G. Chimney stack refurbishment | O. Exposed masonry |
| H. External masonry cladding | P. Render renewal and/or masonry refurbishment |

KEY

- | | |
|--|--|
| | Existing Fabric |
| | New Fabric |
| | Enabling Alterations to Existing Building Fabric |
| | Circulation Spaces |

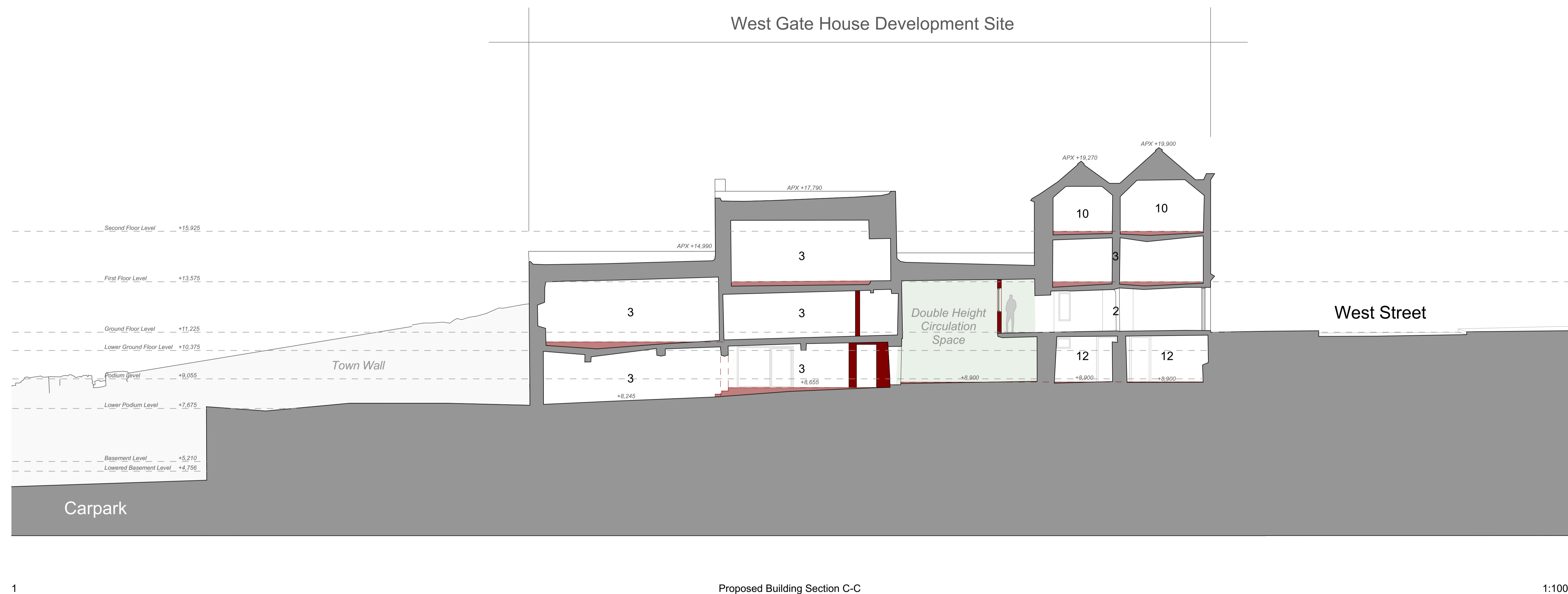


Integrated Design Team: Shaffrey Architects, RIAI Grade 1 Conservation Architects
 Barrett Mahony Consulting Engineers
 ORS Mechanical & Electrical Engineering
 Doyle Kent Planning Partnership Ltd
 IAC Archaeology
 Altamar Environmental Consultants
 Workhouse Union

SHAFFREY ARCHITECTS
 RIAI Grade 1 Conservation Architects
 29 Lower Ormond Quay, Dublin 1
 D01 H299
 e + studio@shaffrey.ie
 t + 353 (1) 8725602

Client: Louth County Council
 County Hall, Millennium Centre
 Dundalk, A91 KFW6
 Date: March 2025
 Scale: 1:100, 1:1000 @ A1
 Drawn By: AR
 Checked by: EK

Project: **WEST GATE HOUSE**
 Westgate House and Drogheda Youth Development Building
 Refurbishment and Extension, West Street, Moneymore, Drogheda
 Drawing Title: Proposed Section B-B
 DWG NO.: **003.2.2**
 Issue: Part 8 Planning



KEY

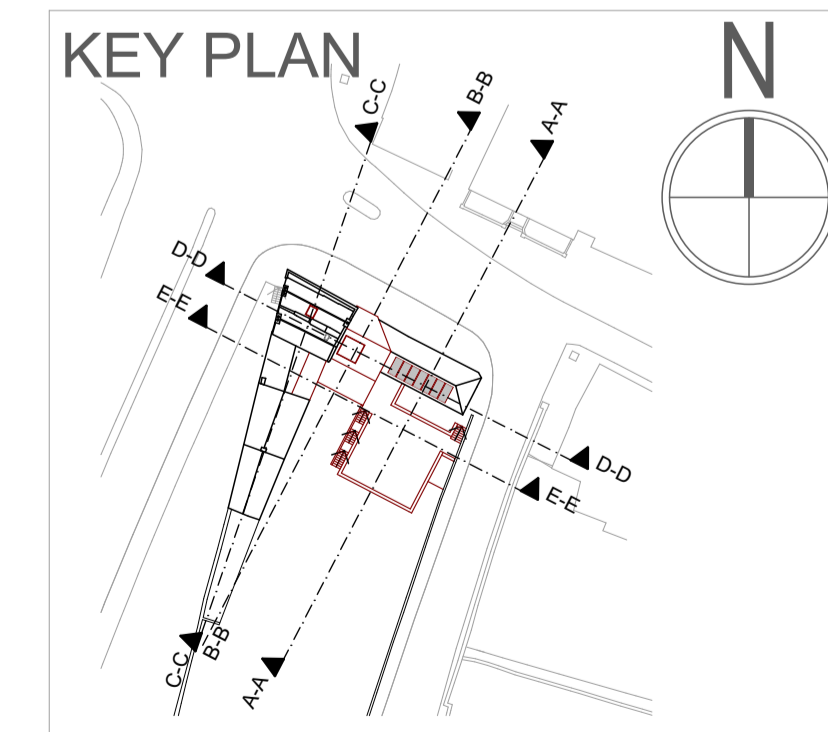
- | | |
|---|--|
| 1. Entrance Hall | 9. Consultation / Meeting Room |
| 2. Café/Reception | 10. Office |
| 3. Community / Makers Space / Education Space | 11. Staff |
| 4. Event / Workshop / Performance Space | 12. WC |
| 5. Ancillary Support Space | 13. Plant |
| 6. Podium Roof Garden | 14. Storage |
| 7. Terrace | 15. External paved area with integrated bench seat |
| 8. Void | |

KEY

- | | |
|---|--|
| A. Formation of new opening with new glazed window system | I. Metal/timber glazed entrance screen |
| B. Raised roof with roof renewal works | J. Window refurbishment |
| C. Render renewal | K. Window glazing system |
| D. Shopfront repair and conservation | L. Exposed masonry refurbishment |
| E. Render refurbishment | M. Metal railing |
| F. Roof renewal/refurbishment | N. Perforated/louvred metal screen |
| G. Chimney stack refurbishment | O. Exposed masonry |
| H. External masonry cladding | P. Render renewal and/or masonry refurbishment |

KEY

- | |
|--|
| Existing Fabric |
| New Fabric |
| Enabling Alterations to Existing Building Fabric |
| Circulation Spaces |



Integrated Design Team: Shaffrey Architects, RIAI Grade 1 Conservation Architects
 Barrett Mahony Consulting Engineers
 ORS Mechanical & Electrical Engineering
 Doyle Kent Planning Partnership Ltd
 IAC Archaeology
 Altamar Environmental Consultants
 Workhouse Union

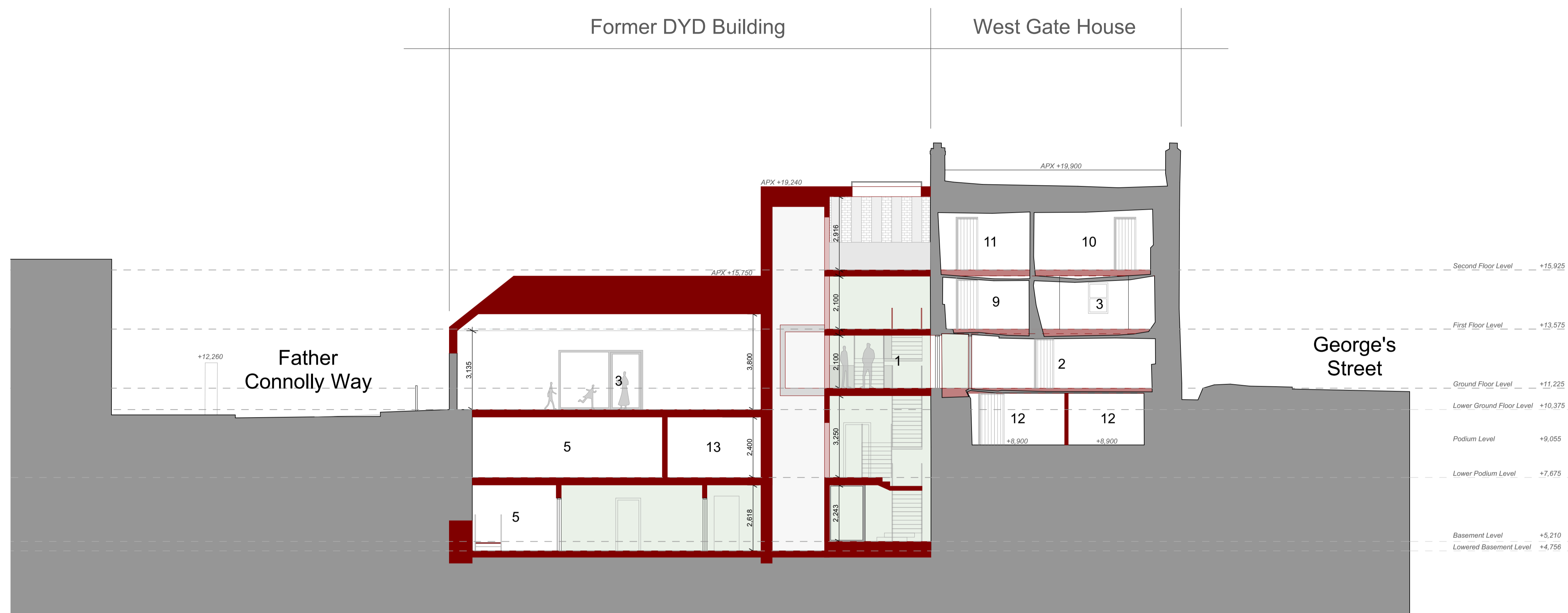
SHAFFREY ARCHITECTS
 RIAI Grade 1 Conservation Architects

29 Lower Ormond Quay, Dublin 1
 D01 H299
 e + studio@shaffrey.ie
 t + 353 (1) 8725602

Client: Louth County Council
 County Hall, Millennium Centre
 Dundalk, A91 KFW6
 Date: March 2025
 Scale: 1:100, 1:1000 @ A1
 Drawn By: AR
 Checked by: EK

Project: **WEST GATE HOUSE**
 Westgate House and Drogheda Youth Development Building
 Refurbishment and Extension, West Street, Moneymore, Drogheda

Drawing Title: **Proposed Section C-C**
 DWG NO.: **003.2.3**
 Issue: **Part 8 Planning**



1

Proposed Section D-D

1:100

KEY

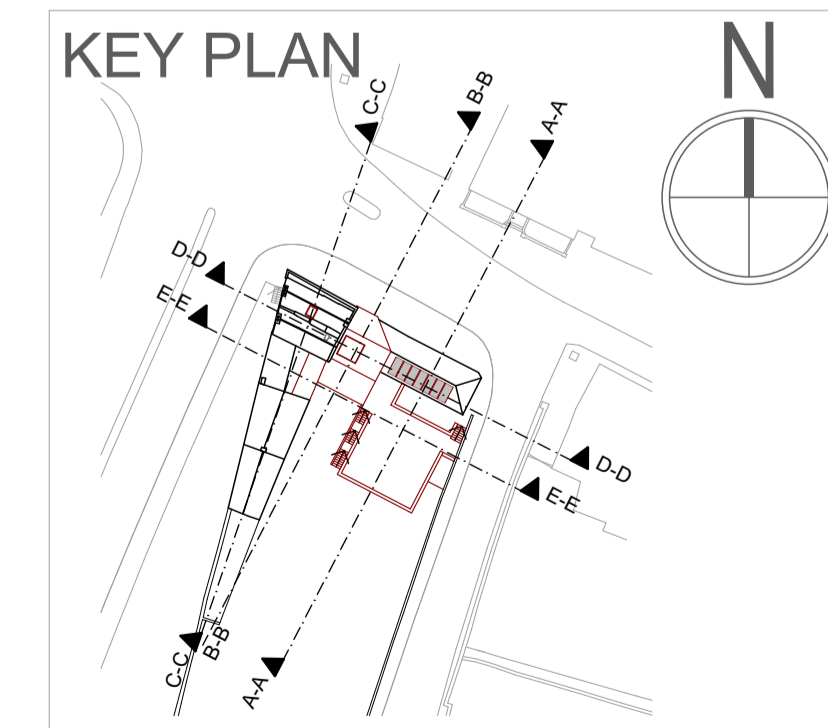
- | | |
|---|--|
| 1. Entrance Hall | 9. Consultation / Meeting Room |
| 2. Café/Reception | 10. Office |
| 3. Community / Makers Space / Education Space | 11. Staff |
| 4. Event / Workshop / Performance Space | 12. WC |
| 5. Ancillary Support Space | 13. Plant |
| 6. Podium Roof Garden | 14. Storage |
| 7. Terrace | 15. External paved area with integrated bench seat |
| 8. Void | |

KEY

- | | |
|---|--|
| A. Formation of new opening with new glazed window system | I. Metal/timber glazed entrance screen |
| B. Raised roof with roof renewal works | J. Window refurbishment |
| C. Render renewal | K. Window glazing system |
| D. Shopfront repair and conservation | L. Exposed masonry refurbishment |
| E. Render refurbishment | M. Metal railing |
| F. Roof renewal/refurbishment | N. Perforated/louvred metal screen |
| G. Chimney stack refurbishment | O. Exposed masonry |
| H. External masonry cladding | P. Render renewal and/or masonry refurbishment |

KEY

- | | |
|--|--|
| | Existing Fabric |
| | New Fabric |
| | Enabling Alterations to Existing Building Fabric |
| | Circulation Spaces |

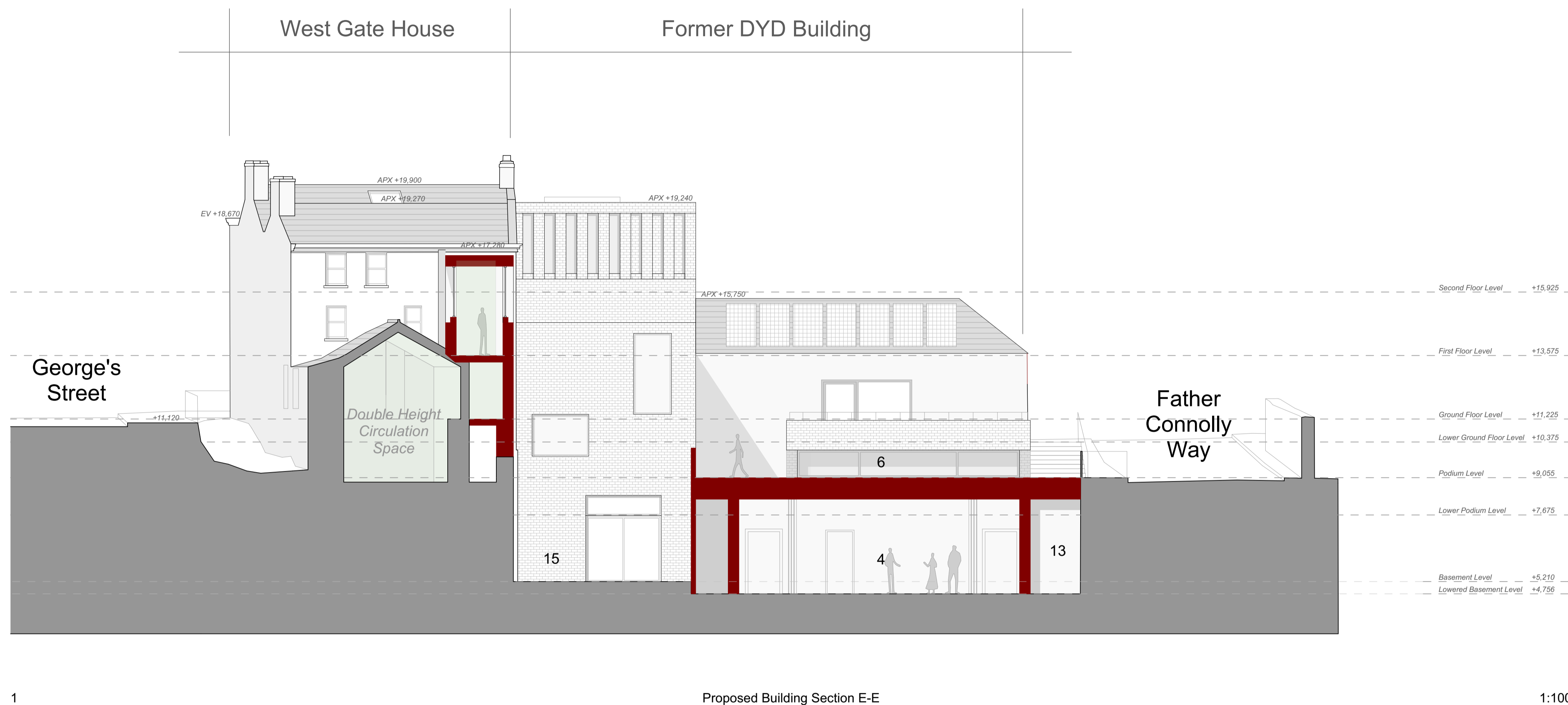


Integrated Design Team: Shaffrey Architects, RIAI Grade 1 Conservation Architects
 Barrett Mahony Consulting Engineers
 ORS Mechanical & Electrical Engineering
 Doyle Kent Planning Partnership Ltd
 IAC Archaeology
 Altamar Environmental Consultants
 Workhouse Union

SHAFFREY ARCHITECTS
 RIAI Grade 1 Conservation Architects
 29 Lower Ormond Quay, Dublin 1
 D01 H299
 e + studio@shaffrey.ie
 t + 353 (1) 8725602

Client: Louth County Council
 County Hall, Millennium Centre
 Dundalk, A91 KFW6
 Date: March 2025
 Scale: 1:100, 1:1000 @ A1
 Drawn By: AR
 Checked by: EK

Project: **WEST GATE HOUSE**
 Westgate House and Drogheda Youth Development Building
 Refurbishment and Extension, West Street, Moneymore, Drogheda
 Drawing Title: Proposed Section D-D
 DWG NO.: **003.2.4**
 Issue: Part 8 Planning



KEY

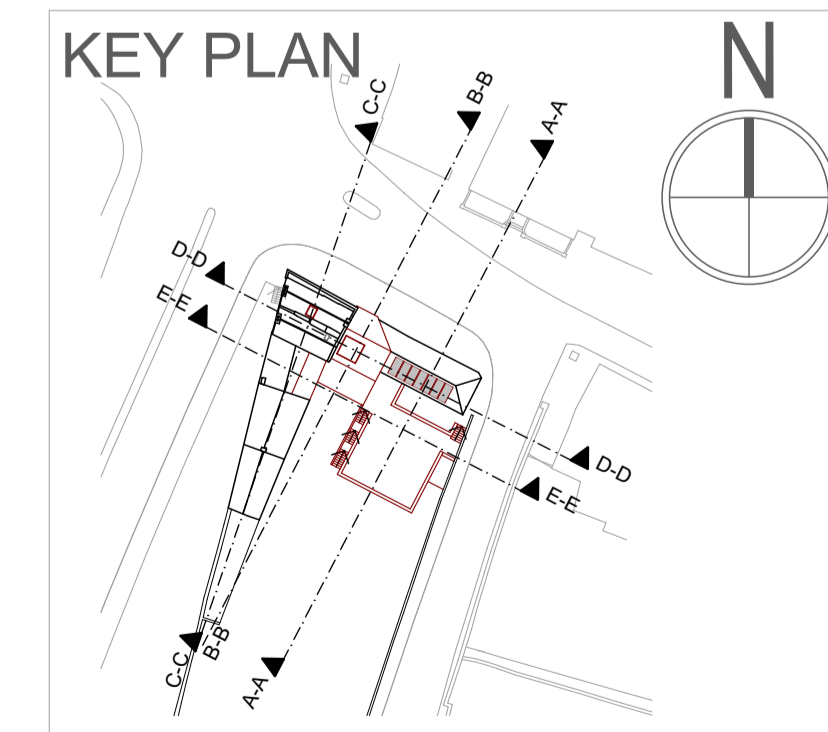
- | | |
|---|--|
| 1. Entrance Hall | 9. Consultation / Meeting Room |
| 2. Café/Reception | 10. Office |
| 3. Community / Makers Space / Education Space | 11. Staff |
| 4. Event / Workshop / Performance Space | 12. WC |
| 5. Ancillary Support Space | 13. Plant |
| 6. Podium Roof Garden | 14. Storage |
| 7. Terrace | 15. External paved area with integrated bench seat |
| 8. Void | |

KEY

- | | |
|---|--|
| A. Formation of new opening with new glazed window system | I. Metal/timber glazed entrance screen |
| B. Raised roof with roof renewal works | J. Window refurbishment |
| C. Render renewal | K. Window glazing system |
| D. Shopfront repair and conservation | L. Exposed masonry refurbishment |
| E. Render refurbishment | M. Metal railing |
| F. Roof renewal/refurbishment | N. Perforated/louvred metal screen |
| G. Chimney stack refurbishment | O. Exposed masonry |
| H. External masonry cladding | P. Render renewal and/or masonry refurbishment |

KEY

- | |
|--|
| Existing Fabric |
| New Fabric |
| Enabling Alterations to Existing Building Fabric |
| Circulation Spaces |



Integrated Design Team: Shaffrey Architects, RIAI Grade 1 Conservation Architects
 Barrett Mahony Consulting Engineers
 ORS Mechanical & Electrical Engineering
 Doyle Kent Planning Partnership Ltd
 IAC Archaeology
 Altamar Environmental Consultants
 Workhouse Union

SHAFFREY ARCHITECTS
 RIAI Grade 1 Conservation Architects
 29 Lower Ormond Quay, Dublin 1
 D01 H299
 e + studio@shaffrey.ie
 t + 353 (1) 8725602

Client: Louth County Council
 County Hall, Millennium Centre
 Dundalk, A91 KFW6
 Date: March 2025
 Scale: 1:100, 1:1000 @ A1
 Drawn By: AR
 Checked by: EK

Project: **WEST GATE HOUSE**
 Westgate House and Drogheda Youth Development Building
 Refurbishment and Extension, West Street, Moneymore, Drogheda
 Drawing Title: **Proposed Section E-E**
 DWG NO.: **003.2.5**
 Issue: **Part 8 Planning**