






KEY

- | | |
|---|--|
| 1. Entrance Hall | 9. Consultation / Meeting Room |
| 2. Café/Reception | 10. Office |
| 3. Community / Makers Space / Education Space | 11. Staff |
| 4. Event / Workshop / Performance Space | 12. WC |
| 5. Ancillary Support Space | 13. Plant |
| 6. Podium Roof Garden | 14. Storage |
| 7. Terrace | 15. External paved area with integrated bench seat |
| 8. Void | |

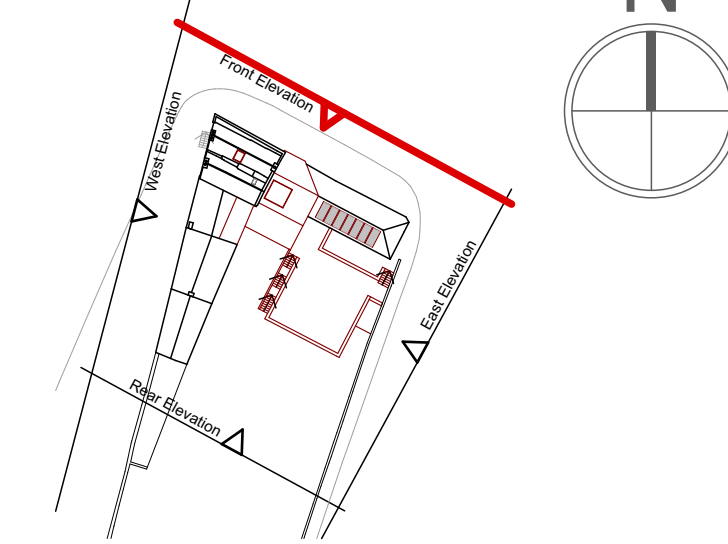
KEY

- | | |
|---|--|
| A. Formation of new opening with new glazed window system | I. Metal/timber glazed entrance screen |
| B. Raised roof with roof renewal works | J. Window refurbishment |
| C. Render renewal | K. Window glazing system |
| D. Shopfront repair and conservation | L. Exposed masonry refurbishment |
| E. Render refurbishment | M. Metal railing |
| F. Roof renewal/refurbishment | N. Perforated/louvred metal screen |
| G. Chimney stack refurbishment | O. Exposed masonry |
| H. External masonry cladding | P. Render renewal and/or masonry refurbishment |

KEY

- | |
|--|
|  Existing Fabric |
|  New Fabric |
|  Enabling Alterations to Existing Building Fabric |

KEY PLAN



Integrated Design Team: Shaffrey Architects, RIAI Grade 1 Conservation Architects
 Barrett Mahony Consulting Engineers
 ORS Mechanical & Electrical Engineering
 Doyle Kent Planning Partnership Ltd
 IAC Archaeology
 Altemar Environmental Consultants
 Workhouse Union

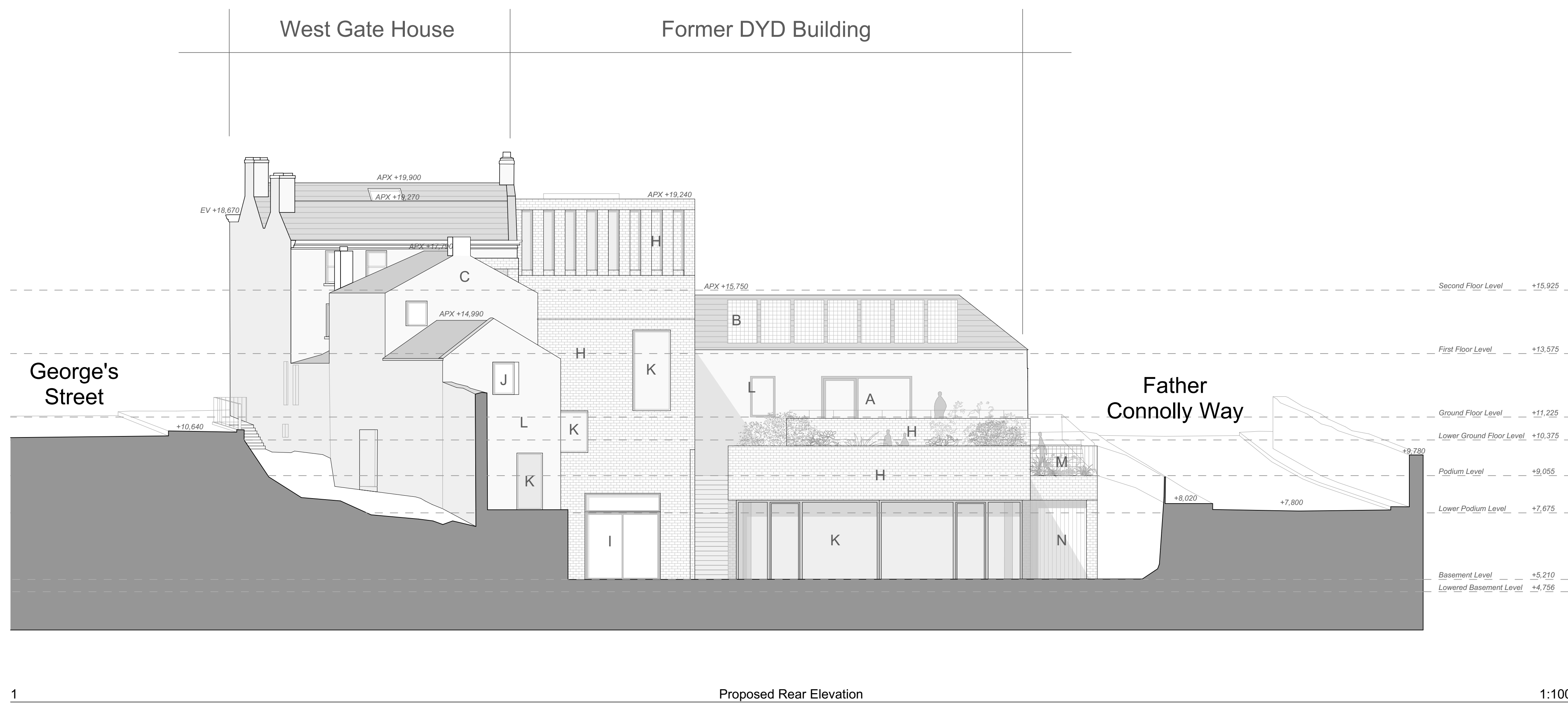
SHAFFREY ARCHITECTS
 RIAI Grade 1 Conservation Architects

29 Lower Ormond Quay, Dublin 1
 D01 H299
 e + studio@shaffrey.ie
 t + 353 (1) 8725602

Client: Louth County Council
 County Hall, Millennium Centre
 Dundalk, A91 KFW6
 Date: March 2025
 Scale: 1:100, 1:1000 @ A1
 Drawn By: AR
 Checked by: EK

Project: **WEST GATE HOUSE**
 Westgate House and Drogheda Youth Development Building
 Refurbishment and Extension, West Street, Moneymore, Drogheda

DWG NO.: **003.3.1**
 Drawing Title: **Proposed Front Elevation**
 Issue: **Part 8 Planning**



KEY

- | | |
|---|--|
| 1. Entrance Hall | 9. Consultation / Meeting Room |
| 2. Café/Reception | 10. Office |
| 3. Community / Makers Space / Education Space | 11. Staff |
| 4. Event / Workshop / Performance Space | 12. WC |
| 5. Ancillary Support Space | 13. Plant |
| 6. Podium Roof Garden | 14. Storage |
| 7. Terrace | 15. External paved area with integrated bench seat |
| 8. Void | |

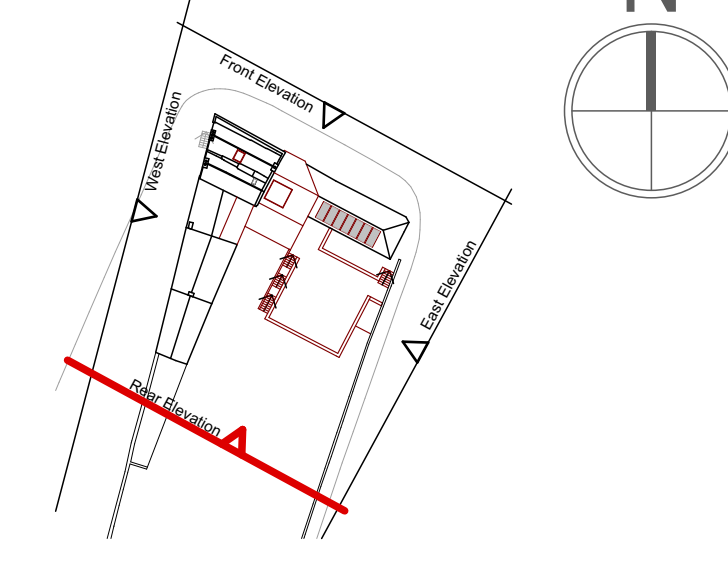
KEY

- | | |
|---|--|
| A. Formation of new opening with new glazed window system | I. Metal/timber glazed entrance screen |
| B. Raised roof with roof renewal works | J. Window refurbishment |
| C. Render renewal | K. Window glazing system |
| D. Shopfront repair and conservation | L. Exposed masonry refurbishment |
| E. Render refurbishment | M. Metal railing |
| F. Roof renewal/refurbishment | N. Perforated/louvred metal screen |
| G. Chimney stack refurbishment | O. Exposed masonry |
| H. External masonry cladding | P. Render renewal and/or masonry refurbishment |

KEY

- Existing Fabric
- New Fabric
- Enabling Alterations to Existing Building Fabric

KEY PLAN



Integrated Design Team: Shaffrey Architects, RIAI Grade 1 Conservation Architects
 Barrett Mahony Consulting Engineers
 ORS Mechanical & Electrical Engineering
 Doyle Kent Planning Partnership Ltd
 IAC Archaeology
 Altemar Environmental Consultants
 Workhouse Union

SHAFFREY ARCHITECTS
 RIAI Grade 1 Conservation Architects
 29 Lower Ormond Quay, Dublin 1
 D01 H299
 e + studio@shaffrey.ie
 t + 353 (1) 8725602

Client: Louth County Council
 County Hall, Millennium Centre
 Dundalk, A91 KFW6
 Date: March 2025
 Scale: 1:100, 1:1000 @ A1
 Drawn By: AR
 Checked by: EK

Project: **WEST GATE HOUSE**
 Westgate House and Drogheda Youth Development Building
 Refurbishment and Extension, West Street, Moneymore, Drogheda
 Drawing Title: **Proposed Rear Elevation**
 DWG NO.: **003.3.2**
 Issue: **Part 8 Planning**



1 Proposed East Elevation 1:100

KEY

- | | |
|---|--|
| 1. Entrance Hall | 9. Consultation / Meeting Room |
| 2. Café/Reception | 10. Office |
| 3. Community / Makers Space / Education Space | 11. Staff |
| 4. Event / Workshop / Performance Space | 12. WC |
| 5. Ancillary Support Space | 13. Plant |
| 6. Podium Roof Garden | 14. Storage |
| 7. Terrace | 15. External paved area with integrated bench seat |
| 8. Void | |

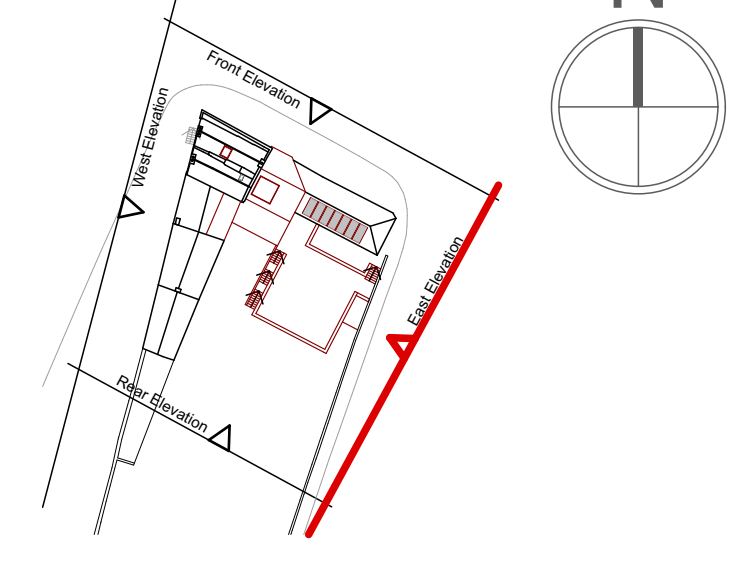
KEY

- | | |
|---|--|
| A. Formation of new opening with new glazed window system | I. Metal/timber glazed entrance screen |
| B. Raised roof with roof renewal works | J. Window refurbishment |
| C. Render renewal | K. Window glazing system |
| D. Shopfront repair and conservation | L. Exposed masonry refurbishment |
| E. Render refurbishment | M. Metal railing |
| F. Roof renewal/refurbishment | N. Perforated/louvred metal screen |
| G. Chimney stack refurbishment | O. Exposed masonry |
| H. External masonry cladding | P. Render renewal and/or masonry refurbishment |

KEY

- | | |
|--|--|
| | Existing Fabric |
| | New Fabric |
| | Enabling Alterations to Existing Building Fabric |

KEY PLAN



Integrated Design Team: **Shaffrey Architects, RIAI Grade 1 Conservation Architects**
 Barrett Mahony Consulting Engineers
 ORS Mechanical & Electrical Engineering
 Doyle Kent Planning Partnership Ltd
 IAC Archaeology
 Altamar Environmental Consultants
 Workhouse Union

SHAFFREY ARCHITECTS

RIAI Grade 1 Conservation Architects
 29 Lower Ormond Quay, Dublin 1
 D01 H299
 e + studio@shaffrey.ie
 t + 353 (1) 8725602

Client: Louth County Council
 County Hall, Millennium Centre
 Dundalk, A91 KFW6
 Date: March 2025
 Scale: 1:100, 1:1000 @ A1
 Drawn By: AR
 Checked by: EK

Project: **WEST GATE HOUSE**
 Westgate House and Drogheda Youth Development Building
 Refurbishment and Extension, West Street, Moneymore, Drogheda

DWG NO.: **003.3.3**
 Drawing Title: **Proposed East Elevation**
 Issue: **Part 8 Planning**

West Gate House Development Site



1

Proposed West Elevation

1:100

KEY

- | | |
|---|--|
| 1. Entrance Hall | 9. Consultation / Meeting Room |
| 2. Café/Reception | 10. Office |
| 3. Community / Makers Space / Education Space | 11. Staff |
| 4. Event / Workshop / Performance Space | 12. WC |
| 5. Ancillary Support Space | 13. Plant |
| 6. Podium Roof Garden | 14. Storage |
| 7. Terrace | 15. External paved area with integrated bench seat |
| 8. Void | |

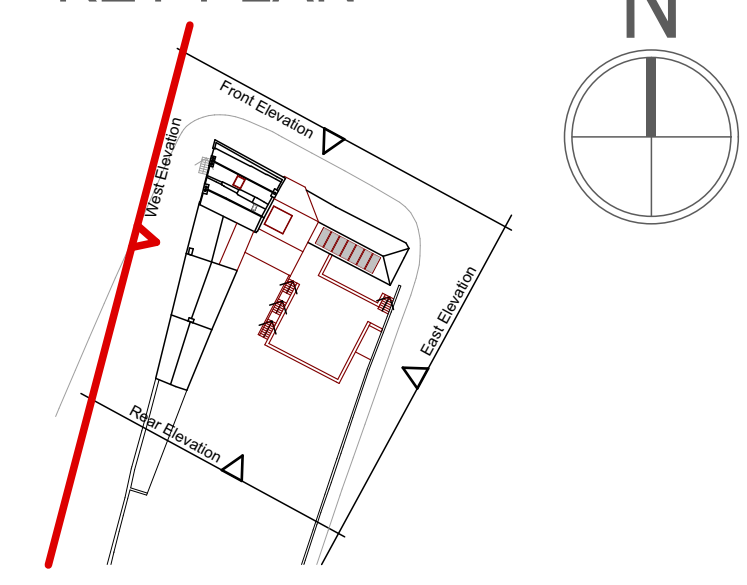
KEY

- | | |
|---|--|
| A. Formation of new opening with new glazed window system | I. Metal/timber glazed entrance screen |
| B. Raised roof with roof renewal works | J. Window refurbishment |
| C. Render renewal | K. Window glazing system |
| D. Shopfront repair and conservation | L. Exposed masonry refurbishment |
| E. Render refurbishment | M. Metal railing |
| F. Roof renewal/refurbishment | N. Perforated/louvred metal screen |
| G. Chimney stack refurbishment | O. Exposed masonry |
| H. External masonry cladding | P. Render renewal and/or masonry refurbishment |

KEY

- | | |
|--|--|
| | Existing Fabric |
| | New Fabric |
| | Enabling Alterations to Existing Building Fabric |

KEY PLAN



Integrated Design Team: Shaffrey Architects, RIAI Grade 1 Conservation Architects
Barrett Mahony Consulting Engineers
ORS Mechanical & Electrical Engineering
Doyle Kent Planning Partnership Ltd
IAC Archaeology
Altamar Environmental Consultants
Workhouse Union

SHAFFREY ARCHITECTS

RIAI Grade 1 Conservation Architects

29 Lower Ormond Quay, Dublin 1
D01 H299
e + studio@shaffrey.ie
t + 353 (1) 8725602

Client: Louth County Council
County Hall, Millennium Centre
Dundalk, A91 KFW6
Date: March 2025
Scale: 1:100, 1:1000 @ A1
Drawn By: AR
Checked by: EK

Project: WEST GATE HOUSE
Westgate House and Drogheda Youth Development Building
Refurbishment and Extension, West Street, Moneymore, Drogheda

DWG NO.: 003.3.4
Issue: Part 8 Planning
Drawing Title: Proposed West Elevation