

**LEGEND:**

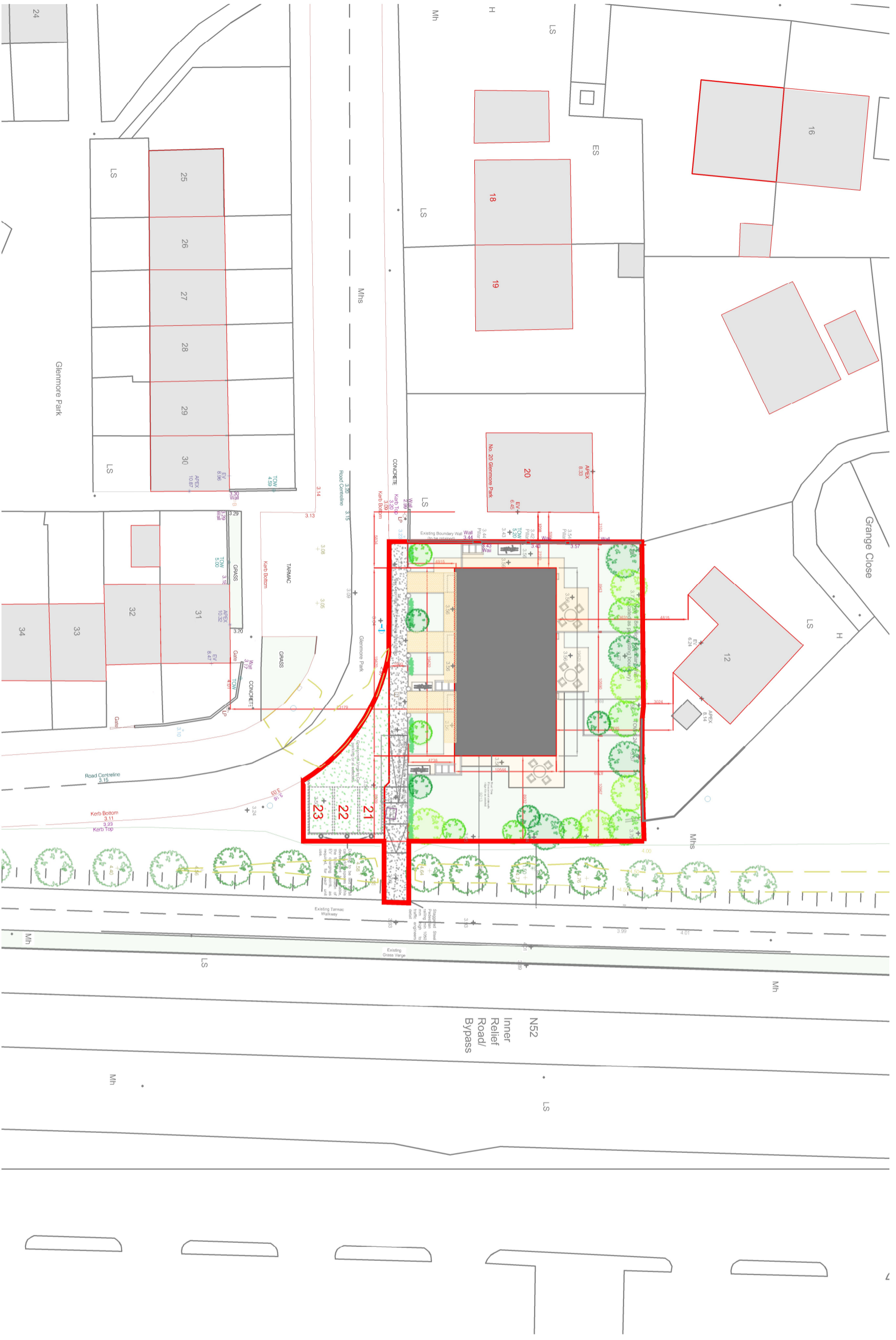
Site Outlined in Red



**SITE AREA:**  
Area of Site circa. 0.075 Ha

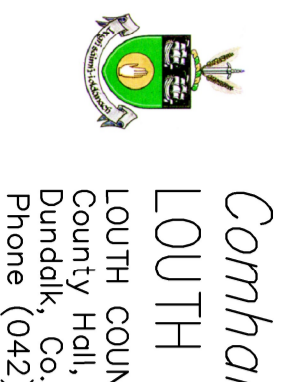
**SCHEDULE OF ACCOMMODATION:**

**3 Bedroom, 6 Person  
Two-Storey Dwellings  
(Terraced) - 3 No. in Total  
GIA = c. 110 sq M Each**



© COPYRIGHT LOUTH COUNTY COUNCIL AND ORDNANCE SURVEY IRELAND

SECTION 179(A) SUBMISSION



*Comhairlí Áitiúla Chondae Lú*  
**LOUTH LOCAL AUTHORITIES**

LOUTH COUNTY COUNCIL  
County Hall, Millennium Centre,  
Dundalk, Co. Louth.  
Phone (042)9355457

**Notes**  
1 This drawing is the property of the Local Authority. It is a confidential document and must not be copied, used, or its contents divulged without prior written consent.  
2 DO NOT SCALE, use figured dimensions only, if in doubt ask.  
3 To be read in conjunction with all contract drawings and specifications.

Rev.	Date	By	Description
A	30/06/23	BMcA	Section 179(a) Submission
B	01/08/23	BMcA	Section 179(a) Submission
C	24/10/23	BMcA	Section 179(a) Submission

**Job**  
GRANGE CLOSE  
MURHEVNAMORE  
DUNDALK CO.LOUTH

**Title**  
SITE LAYOUT PLAN  
SECTION 179(A)  
SUBMISSION

Issue Details	Office Use Only
Drawn B McA	Drawing No.
Sheet A1	Scale 1:200
Date AUGUST 2023	Rev. C

